



**PARAFLEX**  
*Fast Flexible Focused Lighting*



**QUICK SHIP**

**2018**  
*Quick Ship Catalog*  
Nov 2018



***FAST***  
***FLEXIBLE***  
***FOCUSED***



## *Table Of Contents*

- 4 About Us
- 6 Product Overview
- 8 QuickShip Catalog

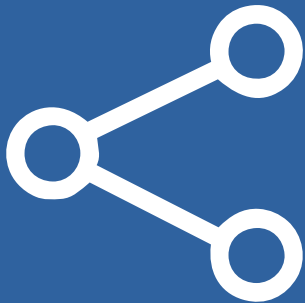
## // *The Paraflex Way*

For over **50 years**, Paraflex Industries has manufactured high quality products for the Lighting Industry. Paraflex prides itself on providing customers with access to the latest advancements in lighting technology while not compromising its core values.



## Fast Solutions

From Quotes to Orders to Shipping PARAFLEX has developed the internal processes to quickly serve your project needs.



## Flexible Products

PARAFLEX offers customers with configurable lighting products built to serve a wide variety of project applications.



## Focused on Service

Our team of experts is ready to serve our customers in a very timely and efficient manner. Reach out today and experience The PARAFLEX Way!



**QUICK SHIP**

## **QUICK SHIP**

1 day: 1-5 pcs

3 days: 5-25 pcs

1 week: 25-100 pcs

# // AVAILABLE PRODUCTS

## WALLPACK

---



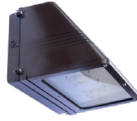
DC102-QS



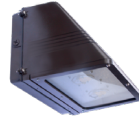
DC150-QS



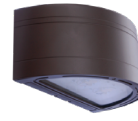
DC200-QS



DC150-90-QS



DC200-90-QS



DCSHM-QS



DCSHM-UD-QS



DCST-QS

## CANOPY & GARAGE

---



CV203-QS



CV303-QS



CV304-QS



CV156-QS

## FLOODLIGHTS

---



DC531-QS



DC545-QS



DC560-QS



DC400-QS



DC570-QS

# DC102

LED WALLPACK LUMINAIRE



QUICK SHIP

When Specifying Options, Please Check with Factory for Availability and Lead-Time.

### COMPACT, HEAVY-DUTY HOUSING

The DC102 is a Small 9" Wallpack with a Die Cast Aluminum Body and Prismatic Borosilicate Glass Lens.

### WET LOCATION, IP-65 RATED

Engineered and Constructed for Exterior Environments

### EASY TO INSTALL MOUNTING

The DC102 can be Surface Mounted over an Existing 4" Outlet Box or Surface Wired through a 1/2" Conduit Entry. Additional Conduit entries Available for Photocells & other Components

### 120-277V STANDARD

### TYPE IV DISTRIBUTION

### PRODUCT APPLICATIONS

- Building Entrances
- Walkways
- Tunnels
- Loading Docks
- Bridges
- Catwalks
- Stairwells
- Building Exteriors

## ORDERING GUIDE

Sample Part # DC102 - 12W - 30K - BZ - PC1

MODEL	WATTAGE	COLOR TEMPERATURE (CCT)	HOUSING COLOR	OPTIONS & ACCESSORIES
DC102			BZ	
	12W	30K 3000K - WARM WHITE	BZ BRONZE	PC1 120V PHOTOCELL
	24W	40K 4000K - NEUTRAL WHITE		PC2 208/277V PHOTOCELL
	36W	50K 5000K - COOL WHITE		MS MOTION SENSOR*
				D1 0-10V DIMMING

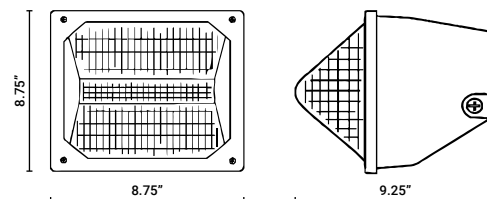
\*CONSULT FACTORY FOR ESTIMATED SHIP DATE

QUANTITY	SHIPS
1-5 Pieces (Before 11AM EST)	Same Day
5-25 Pieces	3 Days
25-100 Pieces	1 Week

## PRODUCT SPECIFICATIONS

NOMINAL WATTAGE	SYSTEM WATTAGE	CCT	LUMENS	EFFICACY	DLC LISTING
12W	12.72	3000K	1,393.50	109.55	STANDARD
12W	12.72	4000K	1,463.18	115.03	STANDARD
12W	12.72	5000K	1,536.33	120.78	STANDARD
24W	23.57	3000K	2,787.00	118.24	STANDARD
24W	23.57	4000K	2,926.35	124.16	STANDARD
24W	23.57	5000K	3,072.67	130.36	STANDARD
36W	34.27	3000K	4,180.50	121.99	STANDARD
36W	34.27	4000K	4,389.53	128.09	STANDARD
36W	34.27	5000K	4,609.00	134.49	STANDARD

## PRODUCT DIMENSIONS



## POWER

POWER FACTOR >90 - THD <20



# DC150

LED WALLPACK LUMINAIRE



**QUICK SHIP**

When Specifying Options, Please Check with Factory for Availability and Lead-Time.

### HEAVY-DUTY HOUSING

The DC150 is a Medium 14" Wallpack with a Die Cast Aluminum Body and Prismatic Borosilicate Glass Lens.

### WET LOCATION, IP-65 RATED

Engineered and Constructed for Exterior Environments

### EASY TO INSTALL MOUNTING

The DC150 can be Surface Mounted over an Existing 4" Outlet Box or Surface Wired through a 1/2" Conduit Entry. Additional Conduit entries Available for Photocells & other Components

### 120-277V STANDARD

### TYPE IV DISTRIBUTION

### PRODUCT APPLICATIONS

- Building Entrances
- Walkways
- Tunnels
- Loading Docks
- Bridges
- Catwalks
- Stairwells

## ORDERING GUIDE

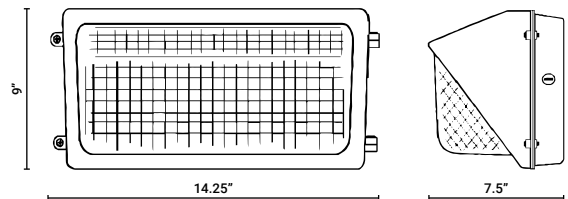
Sample Part # DC150 - 12W - 30K - BZ - PC1

MODEL	WATTAGE	COLOR TEMPERATURE (CCT)	HOUSING COLOR	OPTIONS & ACCESSORIES
DC150			BZ	
	12W	30K 3000K - WARM WHITE	BZ BRONZE	PC1 120V PHOTOCELL
	24W	40K 4000K - NEUTRAL WHITE		PC2 208/277V PHOTOCELL
	36W	50K 5000K - COOL WHITE		MS MOTION SENSOR*
	48W			D1 0-10V DIMMING
	60W			*CONSULT FACTORY FOR ESTIMATED SHIP DATE
	72W*			
		<b>QUANTITY</b>	<b>SHIPS</b>	
		1-5 Pieces (Before 11AM EST)	Same Day	
		5-25 Pieces	3 Days	
		25-100 Pieces	1 Week	

## PRODUCT SPECIFICATIONS

NOMINAL WATTAGE	SYSTEM WATTAGE	CCT	LUMENS	EFFICACY	DLC LISTING
12W	12.72	3000K	1457.50	114.58	STANDARD
12W	12.72	4000K	1530.38	120.31	STANDARD
12W	12.72	5000K	1606.89	126.33	STANDARD
24W	23.02	3000K	2915.00	126.63	STANDARD
24W	23.02	4000K	3060.75	132.96	STANDARD
24W	23.02	5000K	3213.79	139.61	STANDARD
36W	34.27	3000K	4372.50	127.59	STANDARD
36W	34.27	4000K	4591.12	133.97	STANDARD
36W	34.27	5000K	4820.68	140.67	STANDARD
48W	46.60	3000K	5588.65	119.93	STANDARD
48W	46.60	4000K	5756.31	123.53	STANDARD
48W	46.60	5000K	5929.00	127.23	STANDARD
60W	56.83	3000K	6719.78	118.24	STANDARD
60W	56.83	4000K	7055.77	124.16	STANDARD
60W	56.83	5000K	7408.56	130.36	STANDARD
72W	67.65	3000K	8252.43	121.99	STANDARD
72W	67.65	4000K	8665.05	128.09	STANDARD
72W	67.65	5000K	9098.31	134.49	STANDARD

## PRODUCT DIMENSIONS



## POWER

POWER FACTOR >90 - THD <20

# DC200

LED WALLPACK LUMINAIRE



**QUICK SHIP**

When Specifying Options, Please Check with Factory for Availability and Lead-Time.

### LARGE, HEAVY-DUTY HOUSING

The DC200 is a Large 18" Wallpack with a Die Cast Aluminum Body and Prismatic Borosilicate Glass Lens.

### WET LOCATION, IP-65 RATED

Engineered and Constructed for Exterior Environments

### EASY TO INSTALL MOUNTING

The DC200 can be Surface Mounted over an Existing 4" Outlet Box or Surface Wired through a 1/2" Conduit Entry. Additional Conduit entries Available for Photocells & other Components

### 120-277V STANDARD TYPE IV DISTRIBUTION

### PRODUCT APPLICATIONS

- Building Entrances
- Walkways
- Tunnels
- Loading Docks
- Bridges
- Catwalks
- Stairwells

## ORDERING GUIDE

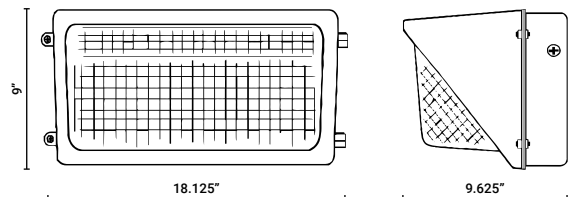
Sample Part # DC200 - 12W - 30K - BZ - PC1

MODEL	WATTAGE	COLOR TEMPERATURE (CCT)	HOUSING COLOR	OPTIONS & ACCESSORIES
DC200			BZ	
	12W	30K 3000K - WARM WHITE	BZ BRONZE	PC1 120V PHOTOCELL
	24W	40K 4000K - NEUTRAL WHITE		PC2 208/277V PHOTOCELL
	36W	50K 5000K - COOL WHITE		MS MOTION SENSOR*
	48W			D1 0-10V DIMMING
	60W			EM EMERGENCY BATTERY PACK*
	72W*			*CONSULT FACTORY FOR ESTIMATED SHIP DATE
	84W*			
	96W*			
		<b>QUANTITY</b>	<b>SHIPS</b>	
		1-5 Pieces (Before 11AM EST)	Same Day	
		5-25 Pieces	3 Days	
		25-100 Pieces	1 Week	

## PRODUCT SPECIFICATIONS

NOMINAL WATTAGE	SYSTEM WATTAGE	CCT	LUMENS	EFFICACY	DLC LISTING
12W	12.72	3000K	1,480.50	116.39	STANDARD
12W	12.72	4000K	1,554.53	122.21	STANDARD
12W	12.72	5000K	1,632.25	128.32	STANDARD
24W	23.68	3000K	2,961.00	125.04	STANDARD
24W	23.68	4000K	3,109.05	131.29	STANDARD
24W	23.68	5000K	3,264.50	137.86	STANDARD
36W	34.27	3000K	4,441.50	129.60	STANDARD
36W	34.27	4000K	4,663.58	136.08	STANDARD
36W	34.27	5000K	4,896.75	142.89	STANDARD
48W	46.60	3000K	5,922.00	127.08	STANDARD
48W	46.60	4000K	6,218.10	133.44	STANDARD
48W	46.60	5000K	6,529.01	140.11	STANDARD
60W	56.83	3000K	7,402.50	130.26	STANDARD
60W	56.83	4000K	7,772.63	136.77	STANDARD
60W	56.83	5000K	8,161.26	143.61	STANDARD
72W	67.65	3000K	8,883.00	131.31	STANDARD
72W	67.65	4000K	9,327.15	137.87	STANDARD
72W	67.65	5000K	9,793.51	144.77	STANDARD
84W	81.55	3000K	10,363.50	127.08	NONE
84W	81.55	4000K	10,881.68	133.44	NONE
84W	81.55	5000K	11,425.76	140.11	NONE
96W	91.65	3000K	11,844.00	129.23	NONE
96W	91.65	4000K	12,436.20	135.69	NONE
96W	91.65	5000K	13,058.01	142.48	NONE

## PRODUCT DIMENSIONS

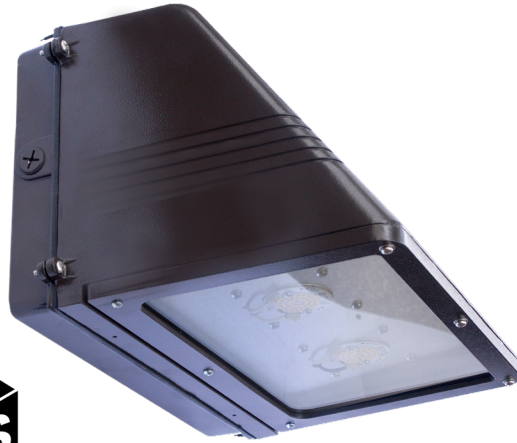


## POWER

POWER FACTOR >90 - THD <20

# DC150-90

CUT-OFF LED WALLPACK LUMINAIRE



**QUICK SHIP**

When Specifying Options, Please Check with Factory for Availability and Lead-Time.

### FULL CUT-OFF, HEAVY-DUTY HOUSING

The DC150-90 is a Medium 14" Wallpack with a Die Cast Aluminum Body and Impact Resistant Glass Lens

### WET LOCATION, IP-65 RATED

Engineered and Constructed for Exterior Environments

### EASY TO INSTALL MOUNTING

The DC150-90 can be Surface Mounted over an Existing 4" Outlet Box or Surface Wired through a 1/2" Conduit Entry. Additional Conduit entries Available for Photocells & other Components

### 120-277V STANDARD TYPE VS DISTRIBUTION

### PRODUCT APPLICATIONS

- Building Entrances
- Walkways
- Tunnels
- Loading Docks
- Bridges
- Catwalks
- Stairwells

## ORDERING GUIDE

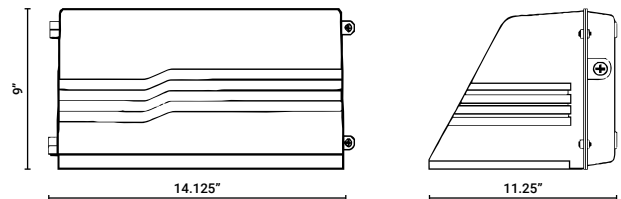
Sample Part # DC150-90 - 12W - 30K - BZ - PC1

MODEL	WATTAGE	COLOR TEMPERATURE (CCT)	HOUSING COLOR	OPTIONS & ACCESSORIES
DC150-90			BZ	
	12W	30K 3000K - WARM WHITE	BZ BRONZE	PC1 120V PHOTOCELL
	24W	40K 4000K - NEUTRAL WHITE		PC2 208/277V PHOTOCELL
	36W	50K 5000K - COOL WHITE		MS MOTION SENSOR*
	48W			D1 0-10V DIMMING
	60W			*CONSULT FACTORY FOR ESTIMATED SHIP DATE
	72W*			
		<b>QUANTITY</b>	<b>SHIPS</b>	
		1-5 Pieces (Before 11AM EST)	Same Day	
		5-25 Pieces	3 Days	
		25-100 Pieces	1 Week	

## PRODUCT SPECIFICATIONS

NOMINAL WATTAGE	SYSTEM WATTAGE	CCT	LUMENS	EFFICACY	DLC LISTING
12W	12.65	3000K	1,530.00	120.95	PREMIUM
12W	12.65	4000K	1,606.50	127.00	PREMIUM
12W	12.65	5000K	1,686.83	133.35	PREMIUM
24W	23.68	3000K	3,060.00	129.22	PREMIUM
24W	23.68	4000K	3,213.00	135.68	PREMIUM
24W	23.68	5000K	3,373.65	142.47	PREMIUM
36W	34.27	3000K	4,590.00	133.94	PREMIUM
36W	34.27	4000K	4,819.50	140.63	PREMIUM
36W	34.27	5000K	5,060.48	147.66	PREMIUM
48W	46.60	3000K	6,120.00	131.33	PREMIUM
48W	46.60	4000K	6,426.00	137.90	PREMIUM
48W	46.60	5000K	6,747.30	144.79	PREMIUM
60W	56.83	3000K	7,650.00	134.61	PREMIUM
60W	56.83	4000K	8,032.50	141.34	PREMIUM
60W	56.83	5000K	8,434.13	148.41	PREMIUM
72W	67.65	3000K	9,180.00	135.70	PREMIUM
72W	67.65	4000K	9,639.00	142.48	PREMIUM
72W	67.65	5000K	10,121.00	149.61	PREMIUM

## PRODUCT DIMENSIONS



## POWER

POWER FACTOR >90 - THD <20

# DC200-90

CUT-OFF LED WALLPACK LUMINAIRE



QUICK SHIP

When Specifying Options, Please Check with Factory for Availability and Lead-Time.

### FULL CUT-OFF, HEAVY-DUTY HOUSING

The DC200-90 is a Large 18" Wallpack with a Die Cast Aluminum Body and Impact Resistant Glass Lens

### WET LOCATION, IP-65 RATED

Engineered and Constructed for Exterior Environments

### EASY TO INSTALL MOUNTING

The DC200-90 can be Surface Mounted over an Existing 4" Outlet Box or Surface Wired through a 1/2" Conduit Entry. Additional Conduit entries Available for Photocells & other Components

### 120-277V STANDARD TYPE VS DISTRIBUTION

### PRODUCT APPLICATIONS

- Building Entrances
- Walkways
- Tunnels
- Loading Docks
- Bridges
- Catwalks
- Stairwells

## ORDERING GUIDE

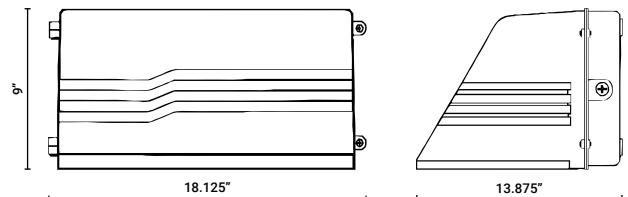
Sample Part # DC200-90 - 12W - 30K - BZ - PC1

MODEL	WATTAGE	COLOR TEMPERATURE (CCT)	HOUSING COLOR	OPTIONS & ACCESSORIES
DC200-90			BZ	
	12W	30K 3000K - WARM WHITE	BZ BRONZE	PC1 120V PHOTOCELL
	24W	40K 4000K - NEUTRAL WHITE		PC2 208/277V PHOTOCELL
	36W	50K 5000K - COOL WHITE		MS MOTION SENSOR*
	48W			D1 0-10V DIMMING
	60W			EM EMERGENCY BATTERY PACK*
	72W*	<b>QUANTITY</b>	<b>SHIPS</b>	*CONSULT FACTORY FOR ESTIMATED SHIP DATE
	84W*	1-5 Pieces (Before 11AM EST)	Same Day	
	96W*	5-25 Pieces	3 Days	
		25-100 Pieces	1 Week	

## PRODUCT SPECIFICATIONS

NOMINAL WATTAGE	SYSTEM WATTAGE	CCT	LUMENS	EFFICACY	DLC LISTING
12W	12.65	3000K	1,530.00	120.95	PREMIUM
12W	12.65	4000K	1,606.50	127.00	PREMIUM
12W	12.65	5000K	1,686.83	133.35	PREMIUM
24W	23.68	3000K	3,060.00	129.22	PREMIUM
24W	23.68	4000K	3,213.00	135.68	PREMIUM
24W	23.68	5000K	3,373.65	142.47	PREMIUM
36W	34.27	3000K	4,008.38	116.96	PREMIUM
36W	34.27	4000K	4,208.79	122.81	PREMIUM
36W	34.27	5000K	4,419.23	128.95	PREMIUM
48W	45.80	3000K	5,344.50	116.69	PREMIUM
48W	45.80	4000K	5,611.73	122.53	PREMIUM
48W	45.80	5000K	5,892.31	128.65	PREMIUM
60W	56.83	3000K	6,680.63	117.55	PREMIUM
60W	56.83	4000K	7,014.66	123.43	PREMIUM
60W	56.83	5000K	7,365.39	129.60	PREMIUM
72W	67.65	3000K	8,016.75	118.50	STANDARD
72W	67.65	4000K	8,417.59	124.43	STANDARD
72W	67.65	5000K	8,838.47	130.65	STANDARD
84W	80.12	3000K	9,352.88	116.74	STANDARD
84W	80.12	4000K	9,820.52	122.57	STANDARD
84W	80.12	5000K	10,311.54	128.70	STANDARD
96W	91.65	3000K	10,689.00	116.63	STANDARD
96W	91.65	4000K	11,223.45	122.46	STANDARD
96W	91.65	5000K	11,784.62	128.58	STANDARD

## PRODUCT DIMENSIONS



## POWER

POWER FACTOR >90 - THD <20

# DCSHM

ROUND LED WALLPACK LUMINAIRE



**QUICK SHIP**

When Specifying Options, Please Check with Factory for Availability and Lead-Time.

### FULL CUT-OFF, HEAVY-DUTY HOUSING

The DCSHM is an 18" Half-Moon Wallpack with a Die Cast Aluminum Body and Impact Resistant Glass Lens

### WET LOCATION, IP-65 RATED

Engineered and Constructed for Exterior Environments

### EASY TO INSTALL MOUNTING

4" x 4" Gasketed Wall Plate allows the Installer to Quickly Mount and Wire the Fixture without Opening the Housing

### 120-277V STANDARD TYPE VS DISTRIBUTION

### PRODUCT APPLICATIONS

- Building Entrances
- Walkways
- Tunnels
- Loading Docks
- Bridges
- Catwalks
- Stairwells

## ORDERING GUIDE

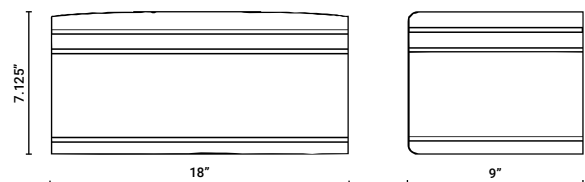
Sample Part # DCSHM -12W - 30K - BZ - EM

MODEL	WATTAGE	COLOR TEMPERATURE (CCT)	HOUSING COLOR	OPTIONS & ACCESSORIES
DCSHM			BZ	
	12W	30K 3000K - WARM WHITE	BZ BRONZE	D1 0-10V DIMMING
	24W	40K 4000K - NEUTRAL WHITE		EM EMERGENCY BATTERY PACK*
	36W	50K 5000K - COOL WHITE		*CONSULT FACTORY FOR ESTIMATED SHIP DATE
	48W			
	60W			
		<b>QUANTITY</b>	<b>SHIPS</b>	
		1-5 Pieces (Before 11AM EST)	Same Day	
		5-25 Pieces	3 Days	
		25-100 Pieces	1 Week	

## PRODUCT SPECIFICATIONS

NOMINAL WATTAGE	SYSTEM WATTAGE	CCT	LUMENS	EFFICACY	DLC LISTING
12W	12.65	3000K	1,530.00	120.95	PREMIUM
12W	12.65	4000K	1,606.50	127.00	PREMIUM
12W	12.65	5000K	1,686.83	133.35	PREMIUM
24W	23.68	3000K	2,802.00	118.33	PREMIUM
24W	23.68	4000K	2,942.10	124.24	PREMIUM
24W	23.68	5000K	3,089.21	130.46	PREMIUM
36W	34.27	3000K	4,203.00	122.64	PREMIUM
36W	34.27	4000K	4,413.15	128.78	PREMIUM
36W	34.27	5000K	4,633.81	135.21	PREMIUM
48W	46.60	3000K	5,604.00	120.26	PREMIUM
48W	46.60	4000K	5,884.20	126.27	PREMIUM
48W	46.60	5000K	6,178.41	132.58	PREMIUM
60W	56.83	3000K	7,005.00	123.26	PREMIUM
60W	56.83	4000K	7,355.25	129.43	PREMIUM
60W	56.83	5000K	7,723.01	135.90	PREMIUM

## PRODUCT DIMENSIONS



## POWER

POWER FACTOR >90 - THD <20

# DCST

CUT-OFF LED WALLPACK LUMINAIRE



**QUICK SHIP**

When Specifying Options, Please Check with Factory for Availability and Lead-Time.

### FULL CUT-OFF, HEAVY-DUTY HOUSING

The DCST is a 14" Trapezoid Wallpack with a Die Cast Aluminum Body and Impact Resistant Glass Lens

### WET LOCATION, IP-65 RATED

Engineered and Constructed for Exterior Environments

### EASY TO INSTALL MOUNTING

The DCST can be Directly Mounted over an Existing 4" Outlet Box with a 4" x 4" Gasketed Wall Plate

**120-277V STANDARD    TYPE V DISTRIBUTION**

### PRODUCT APPLICATIONS

- Building Entrances      Bridges
- Walkways                  Catwalks
- Tunnels                     Stairwells
- Loading Docks

## ORDERING GUIDE

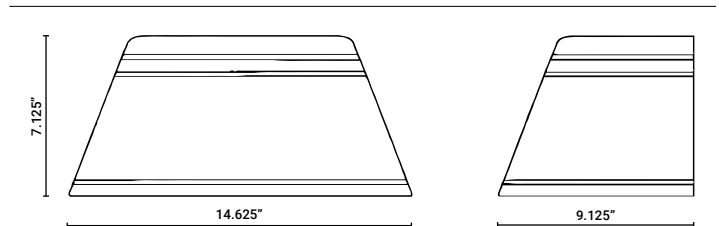
Sample Part # DCST - 12W - 30K - BZ - EM

MODEL	WATTAGE	COLOR TEMPERATURE (CCT)	HOUSING COLOR	OPTIONS & ACCESSORIES
DCST			BZ	
	12W	30K 3000K - WARM WHITE	BZ BRONZE	D1 0-10V DIMMING
	24W	40K 4000K - NEUTRAL WHITE		EM EMERGENCY BATTERY PACK*
	36W	50K 5000K - COOL WHITE		*CONSULT FACTORY FOR ESTIMATED SHIP DATE
	48W			
	60W			
	72W*			
		<b>QUANTITY</b>	<b>SHIPS</b>	
		1-5 Pieces (Before 11AM EST)	Same Day	
		5-25 Pieces	3 Days	
		25-100 Pieces	1 Week	

## PRODUCT SPECIFICATIONS

NOMINAL WATTAGE	SYSTEM WATTAGE	CCT	LUMENS	EFFICACY	DLC LISTING
12W	12.65	3000K	1,530.00	120.95	PREMIUM
12W	12.65	4000K	1,606.50	127.00	PREMIUM
12W	12.65	5000K	1,686.83	133.35	PREMIUM
24W	23.68	3000K	3,060.00	129.22	PREMIUM
24W	23.68	4000K	3,213.00	135.68	PREMIUM
24W	23.68	5000K	3,373.65	142.47	PREMIUM
36W	34.27	3000K	4,147.00	121.01	PREMIUM
36W	34.27	4000K	4,354.35	127.06	PREMIUM
36W	34.27	5000K	4,572.07	133.41	PREMIUM
48W	45.80	3000K	5,529.33	120.73	PREMIUM
48W	45.80	4000K	5,805.80	126.76	PREMIUM
48W	45.80	5000K	6,096.09	133.10	PREMIUM
60W	56.83	3000K	6,911.67	121.62	PREMIUM
60W	56.83	4000K	7,257.25	127.70	PREMIUM
60W	56.83	5000K	7,620.11	134.09	PREMIUM
72W	67.65	3000K	8,294.00	122.60	PREMIUM
72W	67.65	4000K	8,708.70	128.73	PREMIUM
72W	67.65	5000K	9,144.14	135.17	PREMIUM

### PRODUCT DIMENSIONS



### POWER

POWER FACTOR >90 - THD <20

# CV203

LED CANOPY LUMINAIRE



**QUICK SHIP**

When Specifying Options, Please Check with Factory for Availability and Lead-Time.

### COMPACT, HEAVY-DUTY HOUSING

The CV203 is a 9" Square Canopy Luminaire with a Die Cast Aluminum Body and Prismatic Polycarbonate Diffuser with UV Inhibitors

### WET LOCATION, IP-65 RATED

Engineered and Constructed for Exterior Environments

### EASY TO INSTALL MOUNTING

The CV203 can be Directly Mounted over an Existing 4" Outlet Box or Surface Wired through a 1/2" Conduit Entry

### 120-277V STANDARD TYPE VS DISTRIBUTION

### PRODUCT APPLICATIONS

- Building Canopy
- Parking Garages
- Tunnels
- Storage Facilities
- Gas Stations

## ORDERING GUIDE

Sample Part # CV203 - 12W - 30K - BZ - PC1

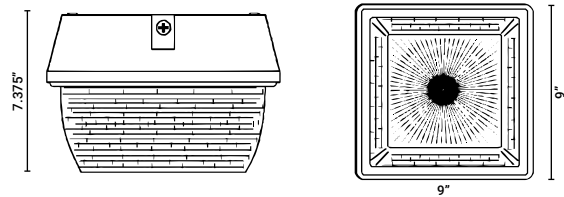
MODEL	WATTAGE	COLOR TEMPERATURE (CCT)	HOUSING COLOR	OPTIONS & ACCESSORIES
CV203			BZ	
	12W	30K 3000K - WARM WHITE	BZ BRONZE	PC1 120V PHOTOCELL
	24W	40K 4000K - NEUTRAL WHITE		PC2 208/277V PHOTOCELL
	36W	50K 5000K - COOL WHITE		D1 0-10V DIMMING

QUANTITY	SHIPS
1-5 Pieces (Before 11AM EST)	Same Day
5-25 Pieces	3 Days
25-100 Pieces	1 Week

## PRODUCT SPECIFICATIONS

NOMINAL WATTAGE	SYSTEM WATTAGE	CCT	LUMENS	EFFICACY
12W	12.65	3000K	1432.50	113.24
12W	12.65	4000K	1475.48	116.64
12W	12.65	5000K	1519.74	120.14
24W	23.54	3000K	2865.00	121.71
24W	23.54	4000K	2950.95	125.36
24W	23.54	5000K	3039.48	129.12
36W	34.27	3000K	4405.69	128.56
36W	34.27	4000K	4537.86	132.41
36W	34.27	5000K	4674.00	136.39

## PRODUCT DIMENSIONS



## POWER

POWER FACTOR >90 - THD <20

# CV303

LED CANOPY LUMINAIRE



**QUICK SHIP**

When Specifying Options, Please Check with Factory for Availability and Lead-Time.

### COMPACT, HEAVY-DUTY HOUSING

The CV303 is a 12" Square Canopy Luminaire with a Die Cast Aluminum Body and Prismatic Polycarbonate Diffuser with UV Inhibitors

### WET LOCATION, IP-65 RATED

Engineered and Constructed for Exterior Environments

### EASY TO INSTALL MOUNTING

The CV303 can be Directly Mounted over an Existing 4" Outlet Box or Surface Wired through a 1/2" Conduit Entry

### 120-277V STANDARD TYPE VS DISTRIBUTION

### PRODUCT APPLICATIONS

- Building Canopy                      Storage Facilities
- Parking Garages                      Gas Stations
- Tunnels

## ORDERING GUIDE

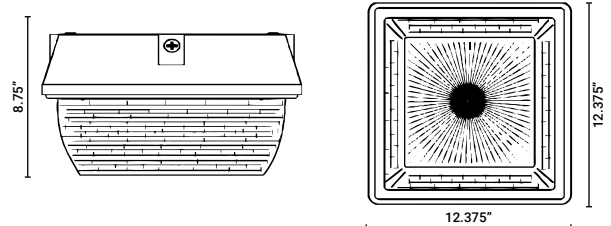
Sample Part # CV303 -12W - 30K - BZ - PC1

MODEL	WATTAGE	COLOR TEMPERATURE (CCT)	HOUSING COLOR	OPTIONS & ACCESSORIES
CV303			BZ	
	24W	30K 3000K - WARM WHITE	BZ BRONZE	PC1 120V PHOTOCELL
	36W	40K 4000K - NEUTRAL WHITE		PC2 208/277V PHOTOCELL
	48W	50K 5000K - COOL WHITE		MS MOTION SENSOR*
	60W			D1 0-10V DIMMING
	72W*			EM EMERGENCY BATTERY PACK*
		<b>QUANTITY</b>	<b>SHIPS</b>	*CONSULT FACTORY FOR ESTIMATED SHIP DATE
		1-5 Pieces (Before 11AM EST)	Same Day	
		5-25 Pieces	3 Days	
		25-100 Pieces	1 Week	

## PRODUCT SPECIFICATIONS

NOMINAL WATTAGE	SYSTEM WATTAGE	CCT	LUMENS	EFFICACY	DLC LISTING
24W	23.54	3000K	2,865.00	121.71	PREMIUM
24W	23.54	4000K	2,950.95	125.36	PREMIUM
24W	23.54	5000K	3,039.48	129.12	PREMIUM
36W	34.27	3000K	4,405.69	128.56	PREMIUM
36W	34.27	4000K	4,537.86	132.41	PREMIUM
36W	34.27	5000K	4,674.00	136.39	PREMIUM
48W	46.60	3000K	5,671.58	121.71	PREMIUM
48W	46.60	4000K	5,841.73	125.36	PREMIUM
48W	46.60	5000K	6,016.98	129.12	PREMIUM
60W	56.83	3000K	6,916.65	121.71	PREMIUM
60W	56.83	4000K	7,124.15	125.36	PREMIUM
60W	56.83	5000K	7,337.87	129.12	PREMIUM
72W	67.26	3000K	8,156.00	121.26	PREMIUM
72W	67.26	4000K	8,400.68	124.90	PREMIUM
72W	67.26	5000K	8,652.70	128.65	PREMIUM

### PRODUCT DIMENSIONS



### POWER

POWER FACTOR >90 - THD <20



# CV304

LED CANOPY LUMINAIRE



**QUICK SHIP**

When Specifying Options, Please Check with Factory for Availability and Lead-Time.

### COMPACT, HEAVY-DUTY HOUSING

The CV304 is a 12" Square Canopy Luminaire with a Die Cast Aluminum Body and Prismatic Polycarbonate Diffuser with UV Inhibitors

### WET LOCATION, IP-65 RATED

Engineered and Constructed for Exterior Environments

### EASY TO INSTALL MOUNTING

The CV304 can be Directly Mounted over an Existing 4" Outlet Box or Surface Wired through a 1/2" Conduit Entry

### 120-277V STANDARD TYPE VS DISTRIBUTION

### PRODUCT APPLICATIONS

- Building Canopy                      Storage Facilities
- Parking Garages                      Gas Stations
- Tunnels

## ORDERING GUIDE

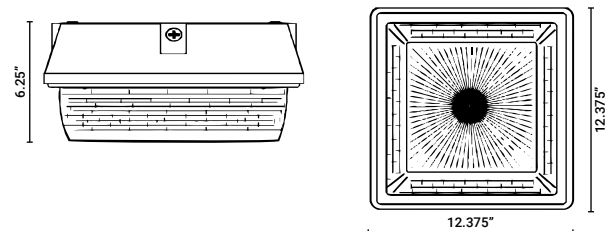
Sample Part # CV304 - 12W - 30K - BZ - PC1

MODEL	WATTAGE	COLOR TEMPERATURE (CCT)	HOUSING COLOR	OPTIONS & ACCESSORIES
CV304			BZ	
	24W	30K 3000K - WARM WHITE	BZ BRONZE	PC1 120V PHOTOCELL
	36W	40K 4000K - NEUTRAL WHITE		PC2 208/277V PHOTOCELL
	48W	50K 5000K - COOL WHITE		MS MOTION SENSOR*
	60W			D1 0-10V DIMMING
	72W*			EM EMERGENCY BATTERY PACK*
		<b>QUANTITY</b>	<b>SHIPS</b>	*CONSULT FACTORY FOR ESTIMATED SHIP DATE
		1-5 Pieces (Before 11AM EST)	Same Day	
		5-25 Pieces	3 Days	
		25-100 Pieces	1 Week	

## PRODUCT SPECIFICATIONS

NOMINAL WATTAGE	SYSTEM WATTAGE	CCT	LUMENS	EFFICACY	DLC LISTING
24W	23.54	3000K	2,875.45	122.15	PREMIUM
24W	23.54	4000K	2,961.71	125.82	PREMIUM
24W	23.54	5000K	3,050.57	129.59	PREMIUM
36W	34.27	3000K	4,186.14	122.15	PREMIUM
36W	34.27	4000K	4,311.72	125.82	PREMIUM
36W	34.27	5000K	4,441.07	129.59	PREMIUM
48W	46.60	3000K	5,692.27	122.15	PREMIUM
48W	46.60	4000K	5,863.04	125.82	PREMIUM
48W	46.60	5000K	6,038.93	129.59	PREMIUM
60W	56.83	3000K	6,941.88	122.15	PREMIUM
60W	56.83	4000K	7,150.14	125.82	PREMIUM
60W	56.83	5000K	7,364.64	129.59	PREMIUM
72W	67.26	3000K	8,215.92	122.15	PREMIUM
72W	67.26	4000K	8,462.40	125.82	PREMIUM
72W	67.26	5000K	8,716.27	129.59	PREMIUM

## PRODUCT DIMENSIONS



## POWER

POWER FACTOR >90 - THD <20

# CV15G

LED CANOPY LUMINAIRE



**QUICK SHIP**

When Specifying Options, Please Check with Factory for Availability and Lead-Time.

### COMPACT, HEAVY-DUTY HOUSING

The CV15G is a 15" Circular Canopy Luminaire with a Die Cast Aluminum Body and Prismatic Polycarbonate Diffuser with UV Inhibitors

### WET LOCATION, IP-65 RATED

Engineered and Constructed for Exterior Environments

### EASY TO INSTALL MOUNTING

The CV15G can be Directly Mounted over an Existing 4" Outlet Box or Surface Wired through a 1/2" Conduit Entry

### 120-277V STANDARD TYPE VS DISTRIBUTION

### PRODUCT APPLICATIONS

- Building Canopy
- Parking Garages
- Tunnels
- Storage Facilities
- Gas Stations

## ORDERING GUIDE

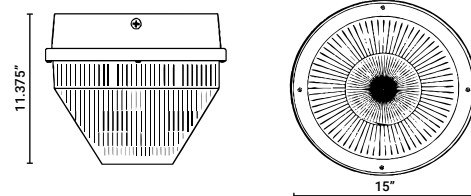
Sample Part # CV15G - 12W - 30K - BZ - PC1

MODEL	WATTAGE	COLOR TEMPERATURE (CCT)	HOUSING COLOR	OPTIONS & ACCESSORIES
CV15G			BZ	
	12W	30K 3000K - WARM WHITE	BZ BRONZE	PC1 120V PHOTOCELL
	24W	40K 4000K - NEUTRAL WHITE		PC2 208/277V PHOTOCELL
	36W	50K 5000K - COOL WHITE		MS MOTION SENSOR*
	48W			D1 0-10V DIMMING
	60W			EM EMERGENCY BATTERY PACK*
	72W*			*CONSULT FACTORY FOR ESTIMATED SHIP DATE
	84W*			
	96W*			
		<b>QUANTITY</b>	<b>SHIPS</b>	
		1-5 Pieces (Before 11AM EST)	Same Day	
		5-25 Pieces	3 Days	
		25-100 Pieces	1 Week	

## PRODUCT SPECIFICATIONS

NOMINAL WATTAGE	SYSTEM WATTAGE	CCT	LUMENS	EFFICACY
12W	12.65	3000K	1362.50	107.71
12W	12.65	4000K	1403.38	110.94
12W	12.65	5000K	1445.48	114.27
24W	23.54	3000K	2725.00	115.76
24W	23.54	4000K	2806.75	119.23
24W	23.54	5000K	2890.95	122.81
36W	34.27	3000K	4097.74	119.57
36W	34.27	4000K	4220.68	123.16
36W	34.27	5000K	4347.30	126.85
48W	46.6	3000K	5450.00	116.95
48W	46.6	4000K	5613.50	120.46
48W	46.6	5000K	5781.91	124.08
60W	56.83	3000K	6812.50	119.88
60W	56.83	4000K	7016.88	123.47
60W	56.83	5000K	7227.38	127.18
72W	67.26	3000K	8175.00	121.54
72W	67.26	4000K	8420.25	125.19
72W	67.26	5000K	8672.86	128.95
84W	81.55	3000K	9537.50	116.95
84W	81.55	4000K	9823.63	120.46
84W	81.55	5000K	10118.33	124.08
96W	92.21	3000K	10900.00	118.21
96W	92.21	4000K	11227.00	121.75
96W	92.21	5000K	11563.81	125.41

## PRODUCT DIMENSIONS



## POWER

POWER FACTOR >90 - THD <20

# DC531

LED FLOODLIGHT LUMINAIRE



**QUICK SHIP**

When Specifying Options, Please Check with Factory for Availability and Lead-Time.

### COMPACT, HEAVY-DUTY HOUSING

The DC531 is a Small Floodlight Luminaire with a Die Cast Aluminum Body and Impact Resistant Glass Lens

### WET LOCATION, IP-65 RATED

Engineered and Constructed for Exterior Environments

### EASY TO INSTALL MOUNTING

The DC531 comes standard with an Integral 1/2" Male Threaded Mount with an Optional Post Top Fitter available

**120-277V STANDARD    TYPE II DISTRIBUTION**

### PRODUCT APPLICATIONS

- Parking Lots
- Walkways
- Buildings
- Signage
- Playgrounds
- Parks & Recreational Fields
- Loading Docks

## ORDERING GUIDE

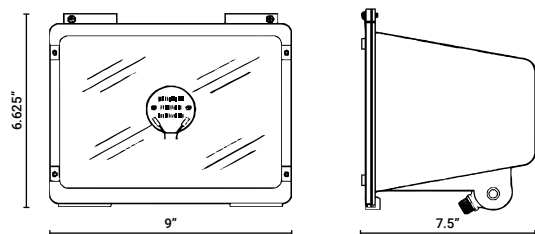
Sample Part # DC531 - 12W - 30K - BZ - PC1

MODEL	WATTAGE	COLOR TEMPERATURE (CCT)	HOUSING COLOR	OPTIONS & ACCESSORIES
DC531			BZ	
	12W	30K 3000K - WARM WHITE	BZ BRONZE	PC1 120V PHOTOCELL
	24W	40K 4000K - NEUTRAL WHITE		PC2 208/277V PHOTOCELL
	36W	50K 5000K - COOL WHITE		PT POST TOP FITTER
				D1 0-10V DIMMING
		<b>QUANTITY</b>	<b>SHIPS</b>	
		1-5 Pieces (Before 11AM EST)	Same Day	
		5-25 Pieces	3 Days	
		25-100 Pieces	1 Week	

## PRODUCT SPECIFICATIONS

NOMINAL WATTAGE	SYSTEM WATTAGE	CCT	LUMENS	EFFICACY	DLC LISTING
12W	12.39	3000K	1,333.00	107.59	PREMIUM
12W	12.72	4000K	1,399.65	110.04	PREMIUM
12W	12.72	5000K	1,469.63	115.54	PREMIUM
24W	23.68	3000K	2,666.00	112.58	PREMIUM
24W	23.68	4000K	2,799.30	118.21	PREMIUM
24W	23.68	5000K	2,939.26	124.12	PREMIUM
36W	34.27	3000K	3,999.00	116.69	PREMIUM
36W	34.27	4000K	4,198.95	122.53	PREMIUM
36W	34.27	5000K	4,408.90	128.65	PREMIUM

## PRODUCT DIMENSIONS



## POWER

POWER FACTOR >90 - THD <20

# DC545

LED FLOODLIGHT LUMINAIRE



**QUICK SHIP**

When Specifying Options, Please Check with Factory for Availability and Lead-Time.

### COMPACT, HEAVY-DUTY HOUSING

The DC545 is a 9" Square Floodlight Luminaire with a Die Cast Aluminum Body and Impact Resistant Glass Lens

### WET LOCATION, IP-65 RATED

Engineered and Constructed for Exterior Environments

### EASY TO INSTALL MOUNTING

The DC545 comes standard with an Integral 1/2" Male Threaded Mount with an Optional Post Top Fitter available

**120-277V STANDARD    TYPE V DISTRIBUTION**

### PRODUCT APPLICATIONS

- Parking Lots
- Walkways
- Buildings
- Signage
- Playgrounds
- Parks & Recreational Fields
- Loading Docks

## ORDERING GUIDE

Sample Part # DC545 - 12W - 30K - BZ - PT

MODEL	WATTAGE	COLOR TEMPERATURE (CCT)	HOUSING COLOR	OPTIONS & ACCESSORIES
DC545			BZ	
	12W	30K 3000K - WARM WHITE	BZ BRONZE	PT POST TOP FITTER
	24W	40K 4000K - NEUTRAL WHITE		D1 0-10V DIMMING
	36W	50K 5000K - COOL WHITE		
	48W			

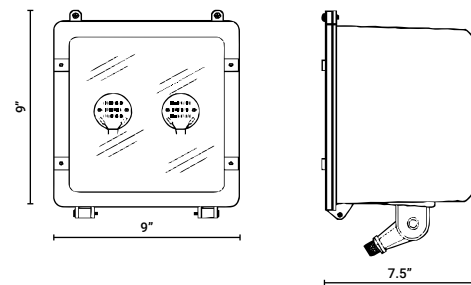
  

QUANTITY	SHIPS
1-5 Pieces (Before 11AM EST)	Same Day
5-25 Pieces	3 Days
25-100 Pieces	1 Week

## PRODUCT SPECIFICATIONS

NOMINAL WATTAGE	SYSTEM WATTAGE	CCT	LUMENS	EFFICACY	DLC LISTING
12W	12.72	3000K	1,408.25	110.71	PREMIUM
12W	12.72	4000K	1,478.66	116.25	PREMIUM
12W	12.72	5000K	1,552.60	122.06	PREMIUM
24W	23.68	3000K	2,816.50	118.94	PREMIUM
24W	23.68	4000K	2,957.32	124.89	PREMIUM
24W	23.68	5000K	3,105.19	131.13	PREMIUM
36W	34.27	3000K	4,224.75	123.28	PREMIUM
36W	34.27	4000K	4,435.99	129.44	PREMIUM
36W	34.27	5000K	4,657.79	135.91	PREMIUM
48W	45.70	3000K	5,633.00	123.26	PREMIUM
48W	46.60	4000K	5,914.65	126.92	PREMIUM
48W	46.60	5000K	6,210.38	133.27	PREMIUM

## PRODUCT DIMENSIONS



## POWER

POWER FACTOR >90 - THD <20

# DC560

LED FLOODLIGHT LUMINAIRE



**QUICK SHIP**

When Specifying Options, Please Check with Factory for Availability and Lead-Time.

### COMPACT, HEAVY-DUTY HOUSING

The DC560 is a 12"x 8" Floodlight Luminaire with a Die Cast Aluminum Body and Impact Resistant Glass Lens

### WET LOCATION, IP-65 RATED

Engineered and Constructed for Exterior Environments

### EASY TO INSTALL MOUNTING

The DC560 comes standard with an Integral 1/2" Female Threaded Mount

### 120-277V STANDARD

### TYPE III DISTRIBUTION

### PRODUCT APPLICATIONS

- Parking Lots
- Walkways
- Buildings
- Signage
- Playgrounds
- Parks & Recreational Fields
- Loading Docks

## ORDERING GUIDE

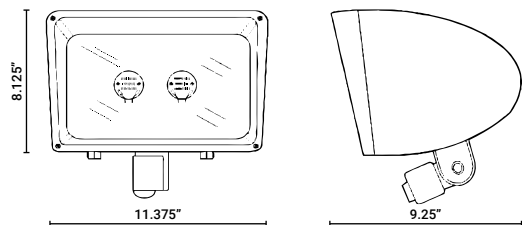
Sample Part # DC560 - 12W - 30K - BZ - PC1

MODEL	WATTAGE	COLOR TEMPERATURE (CCT)	HOUSING COLOR	OPTIONS & ACCESSORIES
DC560			BZ	
	12W	30K 3000K - WARM WHITE	BZ BRONZE	PC1 120V PHOTOCELL
	24W	40K 4000K - NEUTRAL WHITE		PC2 208/277V PHOTOCELL
	36W	50K 5000K - COOL WHITE		D1 0-10V DIMMING
	48W			
		<b>QUANTITY</b>	<b>SHIPS</b>	
		1-5 Pieces (Before 11AM EST)	Same Day	
		5-25 Pieces	3 Days	
		25-100 Pieces	1 Week	

## PRODUCT SPECIFICATIONS

NOMINAL WATTAGE	SYSTEM WATTAGE	CCT	LUMENS	EFFICACY	DLC LISTING
12W	12.73	3000K	1,487.00	116.81	PREMIUM
12W	12.72	4000K	1,561.35	122.75	PREMIUM
12W	12.72	5000K	1,639.42	128.89	PREMIUM
24W	23.68	3000K	2,974.00	125.59	PREMIUM
24W	23.68	4000K	3,122.70	131.87	PREMIUM
24W	23.68	5000K	3,278.83	138.46	PREMIUM
36W	34.27	3000K	4,461.00	130.17	PREMIUM
36W	34.27	4000K	4,684.05	136.68	PREMIUM
36W	34.27	5000K	4,918.25	143.51	PREMIUM
48W	46.60	3000K	5,948.00	127.64	PREMIUM
48W	46.60	4000K	6,245.40	134.02	PREMIUM
48W	46.60	5000K	6,557.67	140.72	PREMIUM

## PRODUCT DIMENSIONS



## POWER

POWER FACTOR >90 - THD <20

# DC400

LED FLOODLIGHT LUMINAIRE



QUICK SHIP

When Specifying Options, Please Check with Factory for Availability and Lead-Time.

### COMPACT, HEAVY-DUTY HOUSING

The DC400 is a 16"x 10" Floodlight Luminaire with a Die Cast Aluminum Body and Impact Resistant Glass Lens

### WET LOCATION, IP-65 RATED

Engineered and Constructed for Exterior Environments

### VERSATILE MOUNTING OPTIONS

The DC400 is available with Three Mounting Options: Trunnion, Slip-Fitter and Straight Arm

### 120-277V STANDARD TYPE VS DISTRIBUTION

### PRODUCT APPLICATIONS

- Parking Lots
- Playgrounds
- Walkways
- Parks & Recreational Fields
- Buildings
- Loading Docks
- Signage

## ORDERING GUIDE

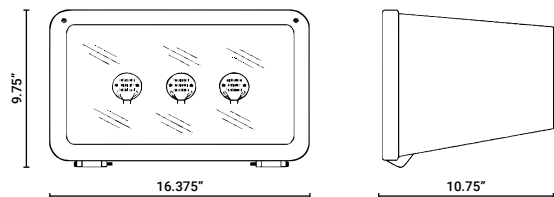
Sample Part # DC400 - 12W - 30K - BZ - NA - PC1

MODEL	WATTAGE	COLOR TEMPERATURE (CCT)	HOUSING COLOR	MOUNTING	OPTIONS & ACCESSORIES
DC400			BZ		
	12W	30K 3000K - WARM WHITE	BZ BRONZE	NA NONE (BY OTHERS)	PC1 120V PHOTOCELL
	24W	40K 4000K - NEUTRAL WHITE		TR TRUNNION MOUNT	PC2 208/277V PHOTOCELL
	36W	50K 5000K - COOL WHITE		SF SLIP-FITTER	MS MOTION SENSOR*
	48W			ST STRAIGHT ARM	D1 0-10V DIMMING
	60W				EM EMERGENCY BATTERY PACK*
	72W*				*CONSULT FACTORY FOR ESTIMATED SHIP DATE
	84W*				
	96W*				
		<b>QUANTITY</b>	<b>SHIPS</b>		
		1-5 Pieces (Before 11AM EST)	Same Day		
		5-25 Pieces	3 Days		
		25-100 Pieces	1 Week		

## PRODUCT SPECIFICATIONS

NOMINAL WATTAGE	SYSTEM WATTAGE	CCT	LUMENS	EFFICACY	DLC LISTING
12W	12.40	3000K	1,333.00	107.59	PREMIUM
12W	12.72	4000K	1,399.65	110.04	PREMIUM
12W	12.72	5000K	1,469.63	115.54	PREMIUM
24W	23.68	3000K	2,636.25	111.33	PREMIUM
24W	23.68	4000K	2,768.06	116.89	PREMIUM
24W	23.68	5000K	2,906.47	122.74	PREMIUM
36W	34.27	3000K	3,954.38	115.39	PREMIUM
36W	34.27	4000K	4,152.09	121.16	PREMIUM
36W	34.27	5000K	4,359.70	127.22	PREMIUM
48W	46.60	3000K	5,633.00	120.88	PREMIUM
48W	46.60	4000K	5,914.65	126.92	PREMIUM
48W	46.60	5000K	6,210.38	133.27	PREMIUM
60W	56.83	3000K	6,823.00	120.06	PREMIUM
60W	56.83	4000K	7,164.15	126.06	PREMIUM
60W	56.83	5000K	7,522.36	132.37	PREMIUM
72W	67.65	3000K	8,122.05	120.06	PREMIUM
72W	67.65	4000K	8,528.15	126.06	STANDARD
72W	67.65	5000K	8,954.56	132.37	STANDARD
84W	80.26	3000K	9,636.00	120.06	STANDARD
84W	81.55	4000K	10,117.80	124.07	STANDARD
84W	81.55	5000K	10,623.70	130.27	STANDARD
96W	92.50	3000K	10,545.00	114.00	STANDARD
96W	91.65	4000K	11,310.00	123.40	STANDARD
96W	91.65	5000K	11,625.90	126.85	STANDARD

## PRODUCT DIMENSIONS



## POWER

POWER FACTOR >90 - THD <20

# DC570

LED FLOODLIGHT LUMINAIRE



**QUICK SHIP**

When Specifying Options, Please Check with Factory for Availability and Lead-Time.

### COMPACT, HEAVY-DUTY HOUSING

The DC570 is a 16" Square Floodlight Luminaire with a Die Cast Aluminum Body and Impact Resistant Glass Lens

### WET LOCATION, IP-65 RATED

Engineered and Constructed for Exterior Environments

### VERSATILE MOUNTING OPTIONS

The DC570 is available with Three Mounting Options: Trunnion, Slip-Fitter and Straight Arm

### 120-277V STANDARD TYPE V DISTRIBUTION

### PRODUCT APPLICATIONS

- Parking Lots
- Playgrounds
- Walkways
- Parks & Recreational Fields
- Buildings
- Loading Docks
- Signage

## ORDERING GUIDE

Sample Part # DC570 - 12W - 30K - BZ - NA - PC1

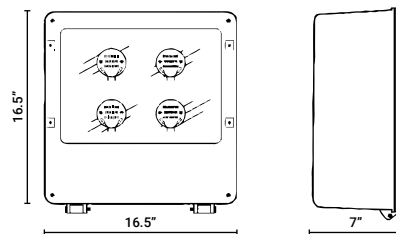
MODEL	WATTAGE	COLOR TEMPERATURE (CCT)	HOUSING COLOR	MOUNTING	OPTIONS & ACCESSORIES
DC570			BZ		
	12W	30K 3000K - WARM WHITE	BZ BRONZE	NA NONE (BY OTHERS)	PC1 120V PHOTOCELL
	24W	40K 4000K - NEUTRAL WHITE		TR TRUNNION MOUNT	PC2 208/277V PHOTOCELL
	36W	50K 5000K - COOL WHITE		SF SLIP-FITTER	MS MOTION SENSOR*
	48W			ST STRAIGHT ARM	D1 0-10V DIMMING
	60W				EM EMERGENCY BATTERY PACK*
	72W*	<b>QUANTITY</b>		<b>SHIPS</b>	
	84W*	1-5 Pieces (Before 11AM EST)		Same Day	
	96W*	5-25 Pieces		3 Days	
		25-100 Pieces		1 Week	

\*CONSULT FACTORY FOR ESTIMATED SHIP DATE

## PRODUCT SPECIFICATIONS

NOMINAL WATTAGE	SYSTEM WATTAGE	CCT	LUMENS	EFFICACY	DLC LISTING
12W	12.72	3000K	1,391.25	109.38	PREMIUM
12W	12.72	4000K	1,460.81	114.84	PREMIUM
12W	12.72	5000K	1,533.85	120.59	PREMIUM
24W	23.68	3000K	2,782.50	117.50	PREMIUM
24W	23.68	4000K	2,921.62	123.38	PREMIUM
24W	23.68	5000K	3,067.71	129.55	PREMIUM
36W	34.27	3000K	4,173.75	121.79	PREMIUM
36W	34.27	4000K	4,382.44	127.88	PREMIUM
36W	34.27	5000K	4,601.56	134.27	PREMIUM
48W	46.60	3000K	5,633.00	120.88	PREMIUM
48W	46.60	4000K	5,914.65	126.92	PREMIUM
48W	46.60	5000K	6,210.38	133.27	PREMIUM
60W	56.83	3000K	6,956.25	122.40	STANDARD
60W	56.83	4000K	7,304.06	128.52	STANDARD
60W	56.83	5000K	7,669.27	134.95	STANDARD
72W	67.65	3000K	8,347.50	123.39	STANDARD
72W	67.65	4000K	8,764.88	129.56	STANDARD
72W	67.65	5000K	9,203.12	136.04	STANDARD
84W	81.55	3000K	9,738.75	119.42	STANDARD
84W	81.55	4000K	10,225.70	125.39	STANDARD
84W	81.55	5000K	10,737.00	131.66	STANDARD
96W	91.40	3000K	11,130.00	121.77	STANDARD
96W	91.65	4000K	11,686.50	127.51	STANDARD
96W	91.65	5000K	12,270.80	133.89	STANDARD

## PRODUCT DIMENSIONS



## POWER

POWER FACTOR >90 - THD <20



**3 Luger Rd. #1**

**Denville, NJ 07834**

**PHONE // (973) 340-6040**

**WEB // [www.paraflex.com](http://www.paraflex.com)**