

DC200-90

CUT-OFF LED WALLPACK LUMINAIRE

PROJECT

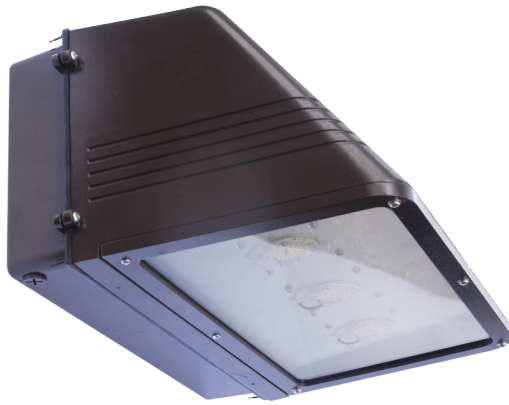
DATE

TYPE

NOTES



REV: 17 0903



FULL CUT-OFF, HEAVY-DUTY HOUSING

The DC200-90 is a Large 18" Wallpack with a Die Cast Aluminum Body and Impact Resistant Glass Lens

WET LOCATION, IP-65 RATED

Engineered and Constructed for Exterior Environments

EASY TO INSTALL MOUNTING

The DC200-90 can be Surface Mounted over an Existing 4" Outlet Box or Surface Wired through a 1/2" Conduit Entry. Additional Conduit entries Available for Photocells & other Components

120-277V STANDARD

PRODUCT APPLICATIONS

- Building Entrances
- Walkways
- Tunnels
- Loading Docks
- Bridges
- Catwalks
- Stairwells

ORDERING GUIDE

MODEL	WATTAGE	COLOR TEMPERATURE (CCT)	HOUSING COLOR	OPTIONS & ACCESSORIES
DC200-90				
	14W	27K 2700K - WARM WHITE	BZ BRONZE (STANDARD)	PC1 120V PHOTOCELL
	28W	30K 3000K - WARM WHITE	WH WHITE	PC2 208/277V PHOTOCELL
	42W	35K 3500K - NEUTRAL WHITE	BL BLACK	MS MOTION SENSOR
	56W	40K 4000K - NEUTRAL WHITE	SL SILVER	D1 0-10V DIMMING
	70W	50K 5000K - COOL WHITE	CC CUSTOM COLOR	D2 STEP DIMMING
	84W	55K 5500K - DAYLIGHT		EM EMERGENCY BATTERY PACK
				V1* 480/347V INPUT (120-277V STANDARD)
				*NOT AVAILABLE WITH A PHOTOCELL OR MOTION SENSOR

PRODUCT SPECIFICATIONS

WATTAGE	SYSTEM W	DELIVERED LUMENS	EFFICACY	CRI
14W	12W	1,645 LM	132 LM/W	>85
28W	24W	3,015 LM	128 LM/W	>85
42W	35W	4,595 LM	133 LM/W	>85
56W	48W	6,250 LM	130 LM/W	>85
70W	59W	7,610 LM	129 LM/W	>85
84W	71W	9,190 LM	129 LM/W	>85

PRODUCT DIMENSIONS

