

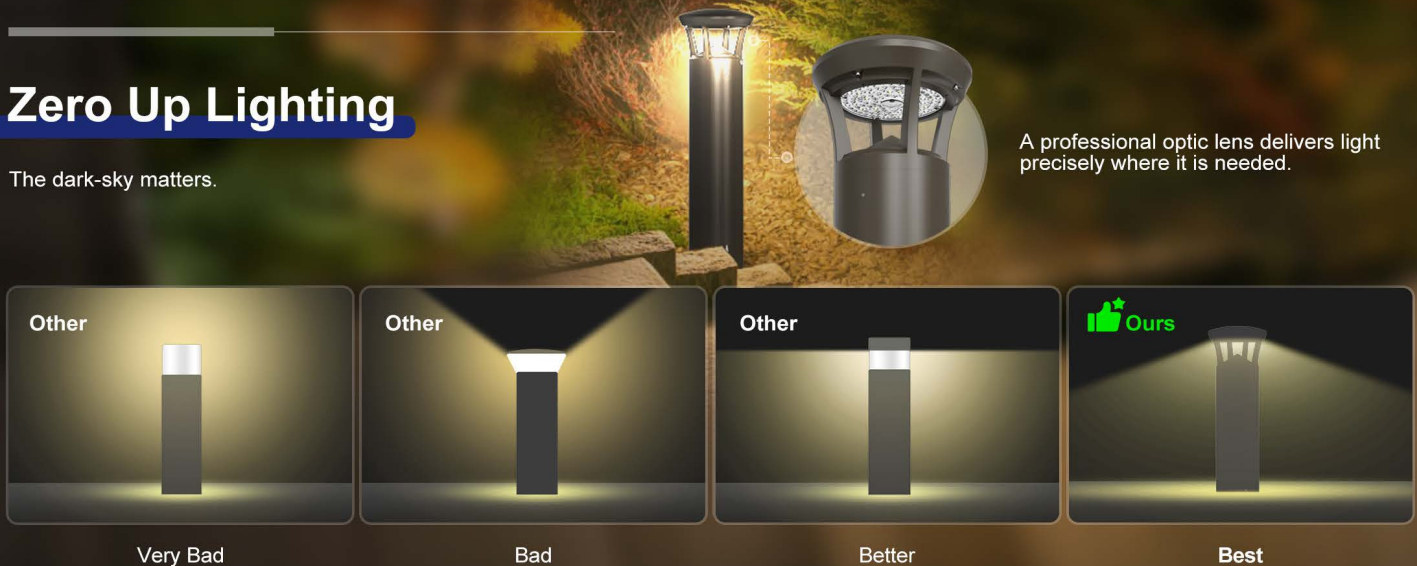
# Aesthetics and Utility Bollard Light

Featuring selectable CCT & Wattage, along with professional optic zero up-light, it offers an ideal lighting solution for both commercial and residential spaces.

PFX-3416

## Zero Up Lighting

The dark-sky matters.

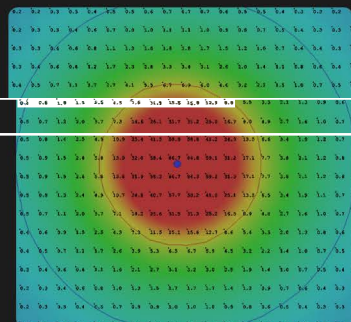


## Distribution

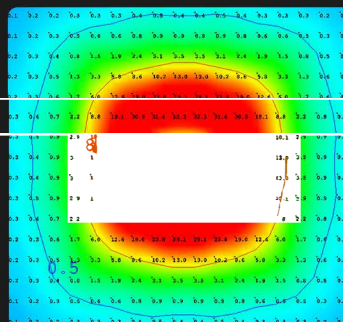
The exceptional optical design of BLA provides a wider and smoother light beam (T5 distribution) around the fixture, with T3 distribution also available as an option.

Competitor

BLA



VS



⊗ Narrow coverage  
⊗ Bad Uniformity



✓ Wide coverage  
✓ Better Uniformity

Type V



Type III





## Power & CCT Selectable

Power & CCT Selectable design, save SKUs, save inventory.

### Adjustable Lumen Output

- Level 1: 24W | 2880lm
- Level 2: 15W | 1800lm
- Level 3: 12W | 1440lm

### Adjustable Color Temperature



## Available Configurations

Up to 30 configurations can be achieved with just 5 core inventory SKUs  
( 2 head styles and 3 length variations bodies ) plus accessories

### Head Top Cap

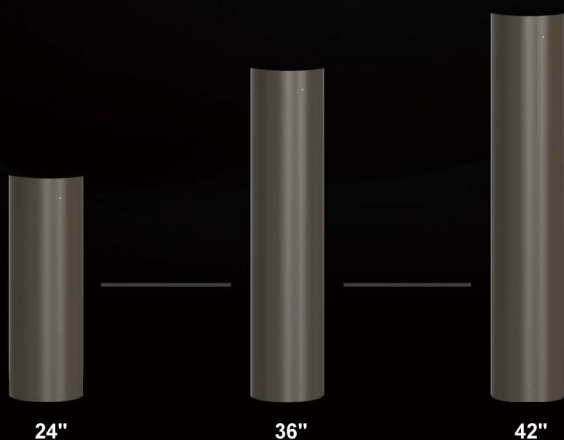


### Optical System

The Louver, Diffuse Lens and Glare Shield are all swappable accessories.



### Round Aluminum Body



## Ordering Guide

EXAMPLE: XBLA24WS24CCSALVT3E

Model X	Wattage XXWS	Size XX	Shape Y	CCT XXX	Input Voltage AA	Dist.Type XX	Emergency Battery Y
PFX 3416 BLA	24WS=24W/15W/12W  Note: WS=Wattages Selectable	24=24in 36=36in 42=42in	C=Crowned Top F=Flat Top	CSA=3000/4000/5000K  Note: CSA=CCT Selectable	LV=120/277/347Vac	T3=Type III TS=Type V	Blank=without emergency E=with emergency