

PFX-3416

LED Bollard Light with Selectable CCT and Lumen



INTRODUCTION

- PFX-3416(BLA) Bollard offers series offers several configurable optic and top cap combinations that meet a wide range of aesthetic and functional requirements.
- Constructed with a die-cast aluminum housing and weather-resistant powder-coated finish, the PFX 3416 series ensures durability and reliability in harsh outdoor conditions, from urban settings to extreme climates.
- With integrated energy-efficient LEDs, the PFX 3416 series outperforms traditional lighting, delivering greater efficiency and reliability, reducing maintenance and operating costs for long-term outdoor lighting projects.
- The PFX 3416 bollards are ideal for lighting pathways, walkways, and perimeters, offering both security and an elevated visual appeal across commercial and public spaces.



PRODUCT SPECIFICATION

Construction:

- A die-cast aluminum housing. Powder coat corrosion resistant finish.

Optics:

- CCT Selectable 3000K or 4000K or 5000K (Default setting).
- Type III and Type V distributions are optional.
- Optic available with louver, glare shield or clear lens for increased vertical illumination.

Electrical:

- 0-10V dimmable driver, the dimming wire does not lead out from the fixture.
- Input voltage 120-277Vac for US market, 120-347Vac for Canada market, and 50/60Hz.

Finish:

- Dark Bronze color is standard. Black and white colors are available.

Mounting:

- Three (3) anchor bolts provided for concrete pad mounting

Ambient Temperature:

- 40°F (-40°C) to 122°F (50°C)

Compliances:

- cULus listed for wet locations.
- DLC® (DesignLights Consortium) Qualified-DLC Standard (T3 Dist.) & DLC Premium (T5 Dist.).

Warranty:

- 5-year limited warranty.

Disclaimer:

Due to the rapid pace of technology change in the Lighting industry, the Information and Data presented in this spec sheet is for reference purposes only, please confirm with PARAFLEX at the time of finalizing the order or design. PARAFLEX does not warrant or represent that the information is free from errors or omission. The information may change without notice and PARAFLEX is not in any way liable for the accuracy of any information printed and stored or in any way interpreted or used.

PFX-3416

LED Bollard Light with Selectable CCT and Lumen



ORDERING GUIDE

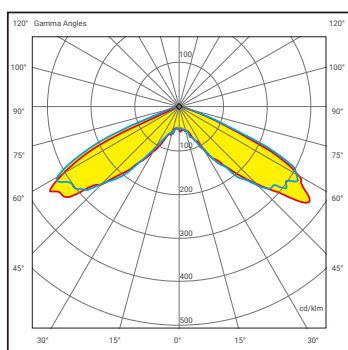
Example: PFX-3416-XBLA24WS24CCSALVT3E

Model	Wattage XXWS	Height XX	Shape Y	CCT XXX	Input Voltage AA	Dist.Type YY	Emergency Battery Y
PFX-3416 -BLA	24WS=24W/15W/12W Note: WS=Wattages Selectable	24=24in 36=36in 42=42in	C=Crowned Top F=Flat Top	CSA=3000/4000/5000K Note: CSA=CCT Selectable	LV=120-277/347Vac	T3=Type III T5=Type V	Blank=without emergency E=with emergency

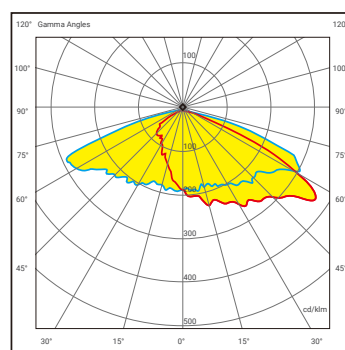
PERFORMANCE DATA

Model	Height	Dist.Type	Wattage	Lumen@5000K	CCT	Input voltage
E; X3416 BLA24WS24YCSALVXXY	24in	Type V	(24/15/12)W	Max.2,880lm	3000/4000/5000K Selectable	120-277Vac/ 120-347Vac 50/60Hz
		Type III		Max.2,520lm		
PFX-3416 BLA24WS36YCSALVXXY	36in	Type V		Max.2,880lm		
		Type III		Max.2,520lm		
PFX-3416 BLA24WS42YCSALVXXY	42in	Type V		Max.2,880lm		
		Type III		Max.2,520lm		

PHOTOMETRICS DIAGRAMS



Type V
(As standard offer)



Type III
(Lens changing needed)

Disclaimer:

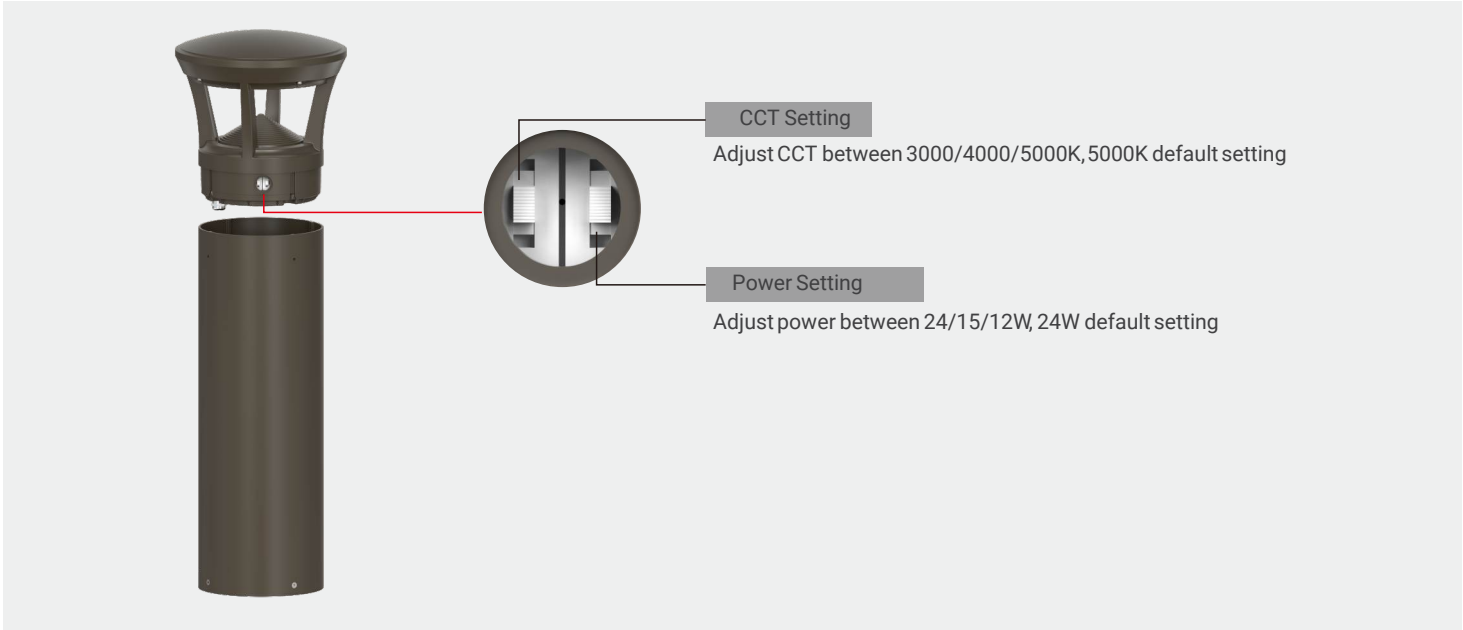
Due to the rapid pace of technology change in the Lighting industry, the Information and Data presented in this spec sheet is for reference purposes only, please confirm with PARAFLEX at the time of finalizing the order or design. PARAFLEX does not warrant or represent that the information is free from errors or omission. The information may change without notice and PARAFLEX is not in any way liable for the accuracy of any information printed and stored or in any way interpreted or used.

PFX-3416

LED Bollard Light with Selectable CCT and Lumen



VERSATILE SELECTION CAPABILITY



ACCESSORIES

Optical Systems

Field-Installable (field-installable purchased separately)

	X180DGS 180 Degree Glare Shield		XDL Diffuse Lens
	XLOV Louver		

Disclaimer:
Due to the rapid pace of technology change in the Lighting industry, the Information and Data presented in this spec sheet is for reference purposes only, please confirm with PARAFLEX at the time of finalizing the order or design. PARAFLEX does not warrant or represent that the information is free from errors or omission. The information may change without notice and PARAFLEX is not in any way liable for the accuracy of any information printed and stored or in any way interpreted or used.

PFX-3416

LED Bollard Light with Selectable CCT and Lumen



ACCESSORIES

Emergency Battery Backup

Factory-Installable OR Field-Installable (field-installable purchased separately)

	<p>PFX-EBB27-4WDC Emergency Battery Backup EMY-04150DO- UH-4W/90min, for XBLA at AC120-277V</p>		<p>PFX-EBB28-4WDC Emergency Battery Backup EMY-04150DO- UH-4W/90min, for XBLA at AC120-347V</p>
--	--	--	--

Mounting Kits

come as standard

	<p>PFX-ABI Anchor Bolts Install (come as standard)</p>
--	---

ELECTRICAL DATA

Model Series	Wattage(W)	Current (A)				
		Input Voltage (V)				
		120	200	240	277	480
PFX-3416-BLA24WS	12	0.11	0.07	0.06	0.05	0.04
	15	0.14	0.08	0.07	0.06	0.05
	24	0.22	0.13	0.11	0.10	0.08

Disclaimer:
Due to the rapid pace of technology change in the Lighting industry, the Information and Data presented in this spec sheet is for reference purposes only, please confirm with PARAFLEX at the time of finalizing the order or design. PARAFLEX does not warrant or represent that the information is free from errors or omission. The information may change without notice and PARAFLEX is not in any way liable for the accuracy of any information printed and stored or in any way interpreted or used.

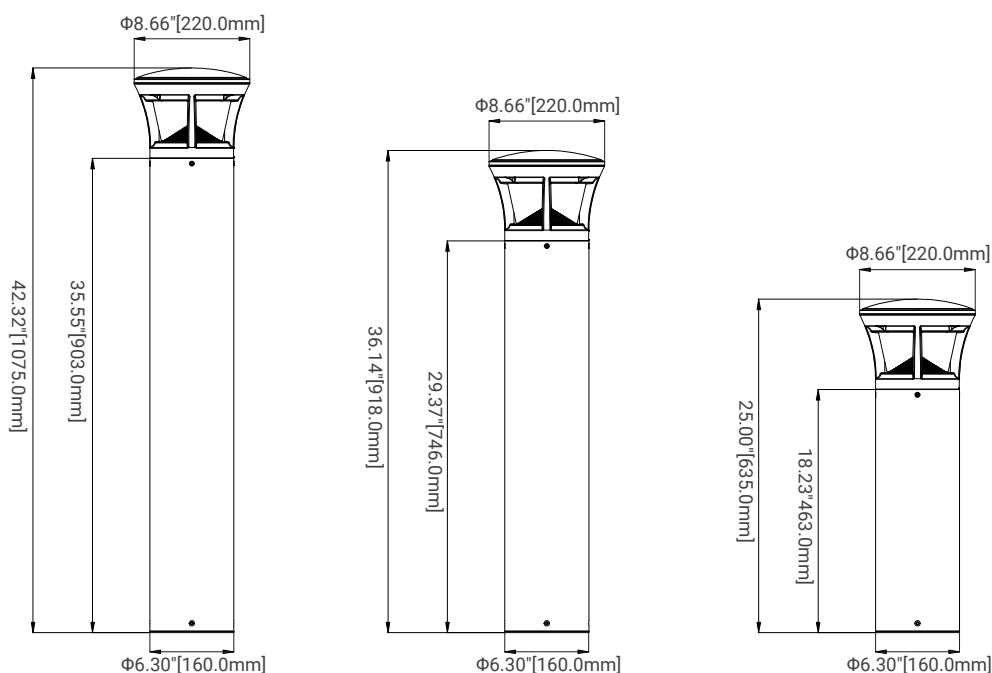
PFX-3416

LED Bollard Light with Selectable CCT and Lumen

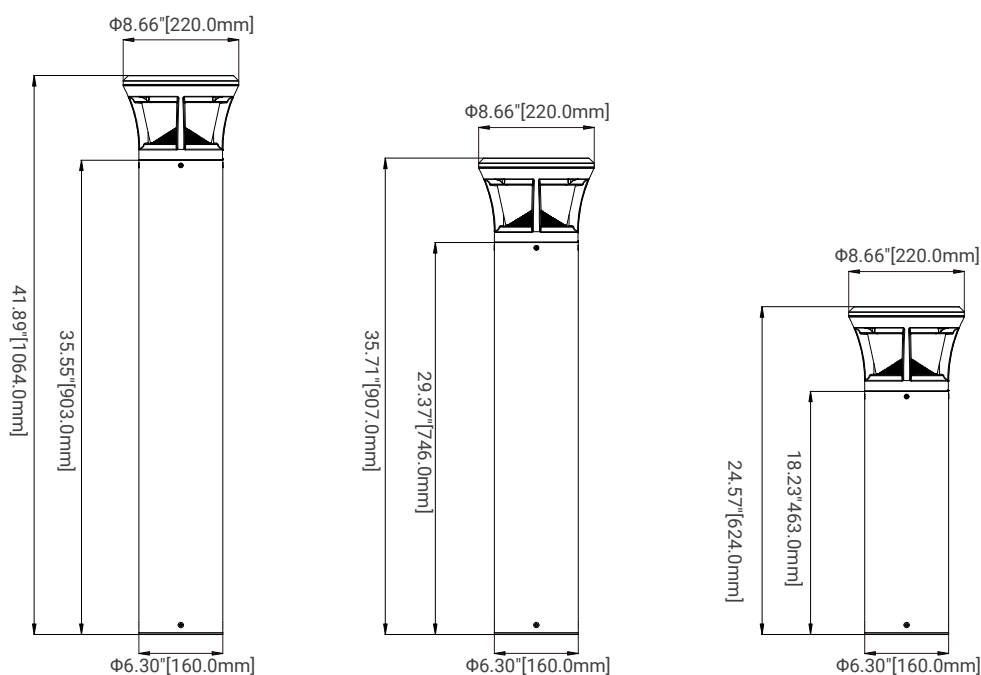


DIMENSIONS

Crowned Top



Flat Top



Disclaimer:

Due to the rapid pace of technology change in the Lighting industry, the Information and Data presented in this spec sheet is for reference purposes only, please confirm with PARAFLEX at the time of finalizing the order or design. PARAFLEX does not warrant or represent that the information is free from errors or omission. The information may change without notice and PARAFLEX is not in any way liable for the accuracy of any information printed and stored or in any way interpreted or used.

Aesthetics and Utility Bollard Light

Featuring selectable CCT & Wattage, along with professional optic zero up-light, it offers an ideal lighting solution for both commercial and residential spaces.

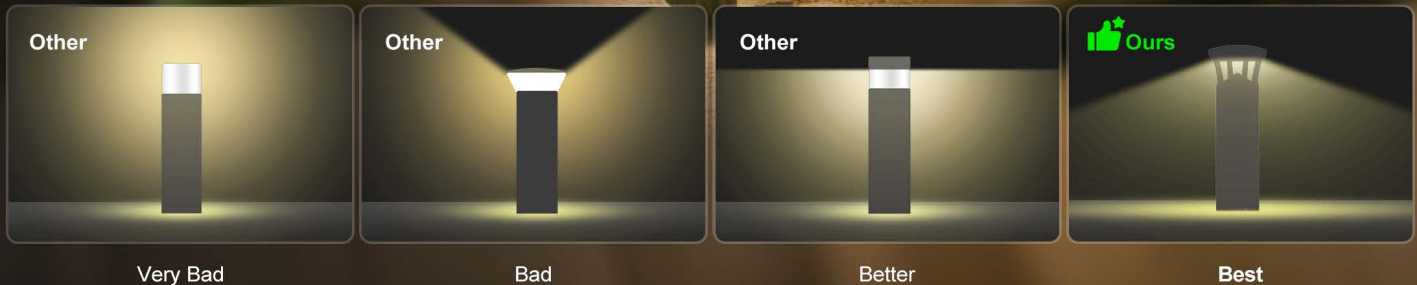
PFX-3416

Zero Up Lighting

The dark-sky matters.



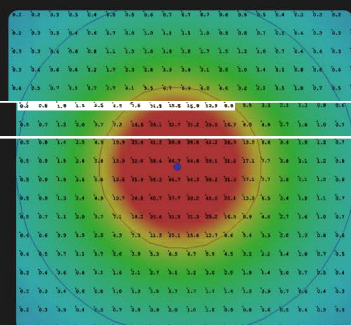
A professional optic lens delivers light precisely where it is needed.



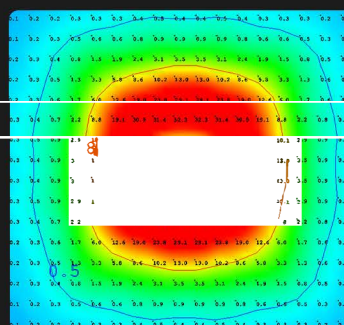
Distribution

The exceptional optical design of BLA provides a wider and smoother light beam (T5 distribution) around the fixture, with T3 distribution also available as an option.

Competitor



BLA



VS



⊗ Narrow coverage
⊗ Bad Uniformity



✓ Wide coverage
✓ Better Uniformity

Type V



Type III



Power & CCT Selectable

Power & CCT Selectable design, save SKUs, save inventory.

Adjustable Lumen Output

- Level 1: 24W | 2880lm
- Level 2: 15W | 1800lm
- Level 3: 12W | 1440lm

Adjustable Color Temperature



Available Configurations

Up to 30 configurations can be achieved with just 5 core inventory SKUs
(2 head styles and 3 length variations bodies) plus accessories

Head Top Cap

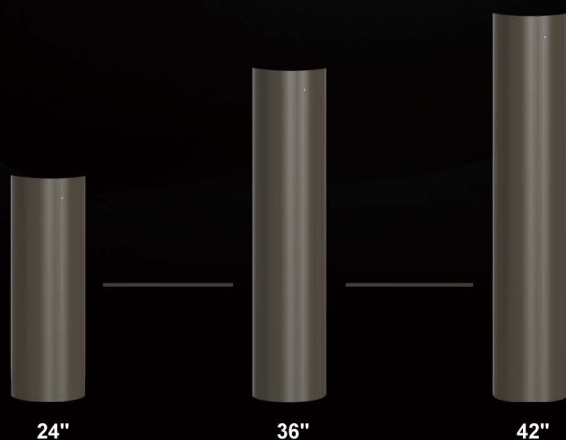


Optical System

The Louver, Diffuse Lens and Glare Shield are all swappable accessories.



Round Aluminum Body



Ordering Guide

EXAMPLE: PFX-3416-24WS24CCSALVT3E

Model X	Wattage XXWS	Size XX	Shape Y	CCT XXX	Input Voltage AA	Dist.Type XX	Emergency Battery Y
PFX 3416 BLA	24WS=24W/15W/12W Note: WS=Wattages Selectable	24=24in 36=36in 42=42in	C=Crowned Top F=Flat Top	CSA=3000/4000/5000K Note: CSA=CCT Selectable	LV=120 277/347Vac	T3=Type III TS=Type V	Blank=without emergency E=with emergency