

PFX-5609

NSF Certified Food Safety Light with Selectable CCT and Lumen



INTRODUCTION

- PFX-5609 series vapor tight luminaire features a slim and modern design. It has best-in-class performance at up to 150lm/w output. They feature a smooth dust-proof surface with a watertight seal that can withstand high-pressure wash downs.
- It is also NSF certified for use in food processing and food safety environments. Applications include poultry processing, food & beverage processing, commercial kitchens, and manufacturing facilities.
- PFX- 5609 Series can be surface mounted to the ceiling or wall, or suspended depending on the application. Sensor and emergency battery backups are optional. The sensor with networking wireless control version also supports LLLC HAISEN BLUE and Silvalr.



PRODUCT SPECIFICATION

Construction:

- Rugged and durable construction with plastic housing.

Electrical:

- 0-10V dimmable driver, which can dim from 100%down to off.
- Input voltage AC120-277V for US market,AC120-347V for Canada market, and 50/60Hz.
- 3ft (36") long power cord provided for easier installation. The power cord is in the lamp body and needs to be led out by yourself.

Optics:

- Selectable CCT A 3500K, 4000K or 5000K (Default setting) , CRI >80.
- UV-stabilized, high-impact,frosted polycarbonate lens for uniform light output and high impact resistance.

Finish:

- Housing is permanent pearl gray color.

Mounting:

- Comes standard with surface mounting kit. Pendant mounting kit is optional.

Ambient Temperature:

- -40°F (-40°C) to 113°F (45°C)

Compliances:

- NSF certified for food processing.
- cULus listed for wet locations.
- DLC® (DesignLights Consortium) Qualified. Please refer to the DLC website for specific product qualifications at www.designlights.org.

Warranty:

- 5-year limited warranty.

Disclaimer:

Due to the rapid pace of technology change in the Lighting industry, the Information and Data presented in this spec sheet is for reference purposes only, please confirm with PARAFLEX at the time of finalizing the order or design. PARAFLEX does not warrant or represent that the information is free from errors or omission. The information may change without notice and PARAFLEX is not in any way liable for the accuracy of any information printed and stored or in any way interpreted or used.

PFX-5609

NSF Certified Food Safety Light with Selectable CCT and Lumen



ORDERING GUIDE

Example: PFX-5609-VTW(165/135/105)W-(35/40/50)KUV-S

Model	Wattage ¹ XXW	CCT ² XXK	Input Voltage ³ AA	Sensor Y
PFX-5609-VTW	(165/135/105)W	35/40/50K=3500/4000/5000K	UV=120-277Vac LV=120-347Vac	S=with sensor blank=without sensor

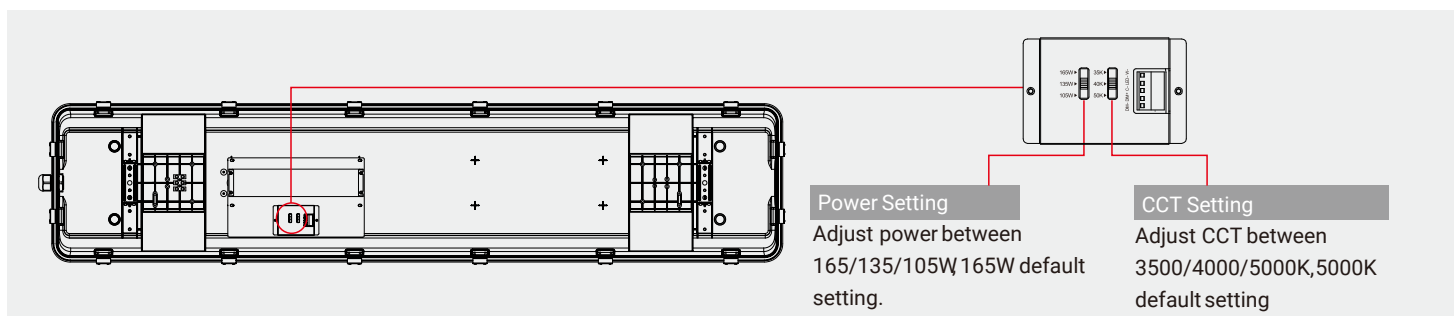
Note: 1.(165/135/105)W=165W, 135W, 105W Selectable, 165W default setting.
2.(35/40/50)K=3500K, 4000K, 5000K Selectable, 5000K default setting.
3.The Input Voltage AC120-277V is for US Market, AC120-347V is for Canada Market.

PERFORMANCE DATA

Lumen values are based on 120V AC input product configuration, contact for performance data on any configurations not shown here.

Model	Lumen Level	Wattage Selectable	Nominal CCT	CCT Selectable	Lumens	Watts	LPW	CRI
PFX-5609-VTW(165/135/105)W-(35/40/50)KAA-Y	1	YES	3500K	YES	16,900	105	161	>80
			4000K		18,650	105	178	
			5000K		17,250	105	165	
	2		3500K		20,900	135	155	
			4000K		23,100	135	171	
			5000K		21,350	135	158	
	3		3500K		24,750	165	150	
			4000K		27,400	165	166	
			5000K		25,350	165	154	

POWER SELECTION AND CCT SELECTION CAPABILITY



Note: Before Setting Power & CCT, release latches by pulling top of latch away from housing. Gently squeeze the buckle in and take out the PCB board (be careful not to touch the LEDs)

Disclaimer:

Due to the rapid pace of technology change in the Lighting industry, the Information and Data presented in this spec sheet is for reference purposes only, please confirm with PARAFLEX at the time of finalizing the order or design. PARAFLEX does not warrant or represent that the information is free from errors or omission. The information may change without notice and PARAFLEX is not in any way liable for the accuracy of any information printed and stored or in any way interpreted or used.

PFX-5609

NSF Certified Food Safety Light with Selectable CCT and Lumen



ACCESSORIES

Sensor

Field-Installable/ Field-Use ONLY (purchased separately)

	HD09VR-PH Screw-in PIR Sensor		HSE-BSP9H-1 Screw-in PIR Sensor (Networking Wireless Control Version)
	HD07VRC2 Receptacle for Screw-in Sensor		HD06R Remote Control


Emergency Battery Backup

Factory-Installable OR Field-Installable
(field-installable purchased separately)

	PFX-5609-EBB017-15WDC Emergency Battery Backup EMB15YY-260 -15W/90min, for X- VTW, at AC120-277V/347V
--	--

Mounts and Brackets

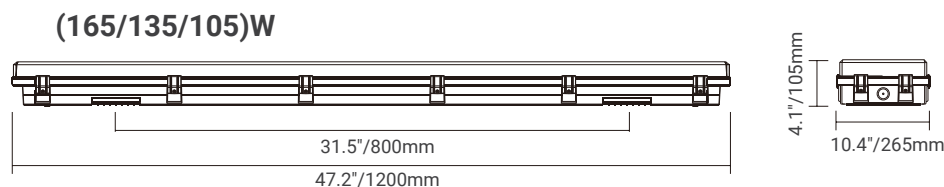
Field-Installable (field-installable purchased separately)

	PFX-5609-SPM-A-VTL Suspension Mounting Kit - 2pcs
--	--

ELECTRICAL DATA

Model Series	Wattage(W)	Current (A)				
		Input Voltage (V)				
		120	208	240	277	347
PFX-5609 VTW(165/135/105)W	105	0.97	0.56	0.49	0.42	0.34
	135	1.25	0.72	0.63	0.54	0.43
	165	1.53	0.88	0.76	0.66	0.53

DIMENSIONS



Disclaimer:

Due to the rapid pace of technology change in the Lighting industry, the Information and Data presented in this spec sheet is for reference purposes only, please confirm with PARAFLEX at the time of finalizing the order or design. PARAFLEX does not warrant or represent that the information is free from errors or omission. The information may change without notice and PARAFLEX is not in any way liable for the accuracy of any information printed and stored or in any way interpreted or used.

PFX-5609

NSF Certified Food Safety Light with Selectable CCT and Lumen



SHIPPING INFORMATION

Model	Carton Size (in)	G.W. (lbs)	Per carton (pcs)	20GP (pcs)	40HQ (pcs)
PFX-5609-VTW(165/135/105)W	48.43 x 12.01 x 5.91	16.49	1	419	1,153

Note: The packaging data can sometimes be outdated or incomplete. For the most reliable information, please reach out to us directly.

Disclaimer:

Due to the rapid pace of technology change in the Lighting industry, the Information and Data presented in this spec sheet is for reference purposes only, please confirm with PARAFLEX at the time of finalizing the order or design. PARAFLEX does not warrant or represent that the information is free from errors or omission. The information may change without notice and PARAFLEX is not in any way liable for the accuracy of any information printed and stored or in any way interpreted or used.

NSF Vapor Tight Light Installation Instruction

Please read this manual carefully before using the product

Upon receipt of fixture, thoroughly inspect for any freight damage. All damage should be reported to the delivery carrier. Compare the catalog description listed on the packing slip with the fixture label on the inside of the housing to be sure you have received the correct merchandise.

READ AND FOLLOW THESE SAFETY INSTRUCTIONS!

- To reduce the risk of death, personal injury or property damage from fire, electric shock, falling parts, cuts/abrasions, and other hazards please read all warnings and instructions included with and on the fixture box and all fixture labels.
- Before installing, servicing, or performing routine maintenance on this equipment, follow these general precautions.
- Commercial installation, service and maintenance of luminaires should be performed by a qualified licensed electrician.
- For Residential installation: If you are unsure about the installation or maintenance of the luminaires, consult a qualified licensed electrician and check your local electrical code.
- Maintenance of the luminaires should be performed by person(s) familiar with the luminaires' construction and operation and any hazards involved. Regular fixture maintenance programs are recommended.
- This fixture is intended to be connected to a properly installed and grounded UL listed junction box.
- It will occasionally be necessary to clean the outside of the refractor/lens. Refractor/lens should be washed in a solution of warm water and any mild, non-abrasive household detergent, rinsed with clean water and wiped dry. Should optical assembly become dirty on the inside, wipe refractor/lens and clean in above manner, replacing damaged gaskets as necessary.
- DO NOT INSTALL DAMAGED PRODUCT! This luminaire has been properly packed so that no parts should have been damaged during transit. Inspect to confirm.
- Any part damaged or broken during or after assembly should be replaced.
- These instructions do not purport to cover all details or variations in equipment nor to provide every possible contingency to meet in connection with installation, operation, or maintenance. Should further information be desired or should particular problems arise which are not covered sufficiently for the purchaser's or owner's purposes, this matter should be referred to manufacturer.

WARNING RISK OF ELECTRIC SHOCK

- ▶ Disconnect or turn off power before installation or servicing.
- ▶ Verify that supply voltage is correct by comparing it with the luminaire label information.
- ▶ Make all electrical and grounded connections in accordance with the National Electrical Code (NEC) and any applicable local code requirements.
- ▶ All wiring connections should be capped with UL approved wire connectors.

CAUTION RISK OF INJURY

- ▶ Wear gloves and safety glasses at all times when removing luminaire from carton, installing, servicing or performing maintenance.
- ▶ Avoid direct eye exposure to the light source while it is on.

CAUTION RISK OF PRODUCT DAMAGE

- ▶ Never connect components under load.
- ▶ Do not mount or support these fixtures in a manner that can cut the outer jacket or damaged wire insulation.
- ▶ Unless individual product specifications deem otherwise: Never connect an LED product directly to dimmer packs, occupancy sensors, timing devices, or other control devices. LED fixtures must be powered directly off a switched circuit.
- ▶ Unless individual product specifications deem otherwise: Do not restrict fixture ventilation. Allow for some volume of airspace around the fixture. Avoid covering LED fixtures with insulation, foam, or other material that will prevent convection or cooling.
- ▶ Unless individual product specifications deem otherwise: Do not exceed fixtures' maximum ambient temperature.
- ▶ Only use the fixture in its intended location.
- ▶ LED products are polarity sensitive. Ensure proper polarity before installation.
- ▶ Electrostatic Discharge (ESD): ESD can damage LED fixtures. Personal grounding equipment must be worn during all installation or servicing of the unit.

WARNING RISK OF BURN

- ▶ Allow lamp/fixture to cool before handling. Do not touch enclosure, lens or light source.
- ▶ Do not exceed maximum wattage marked on luminaire label.
- ▶ Follow all manufacturer's warnings, recommendations and restrictions including but not limited to: drivetype, mounting locations/methods, replacement and recycling.
- ▶ Use only lamps that comply with ANSI standards.

CAUTION RISK OF FIRE

- ▶ Keep combustible and other materials that can burn, away from lamp/lens.
- ▶ Do not operate in close proximity to persons, combustible materials, or substances affected by heat.

- ▶ Do not touch individual electrical components as this can cause ESD, shorten lamp life, or alter performance.
- ▶ Some components inside the fixture may not be serviceable. If your unit requires service, stop using the unit immediately and contact a manufacturer representative for assistance.
- ▶ Changes or modifications not expressly approved by manufacturer will void the product warranty.
- ▶ Always read the fixtures' complete installation instructions prior to installation for any additional fixture-specific warnings.

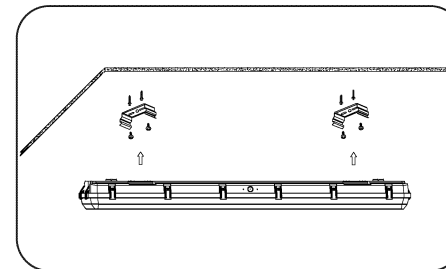
» Package

1. VTW LED Vapor Tight Light
2. Installation Instruction
3. Mounting Accessories

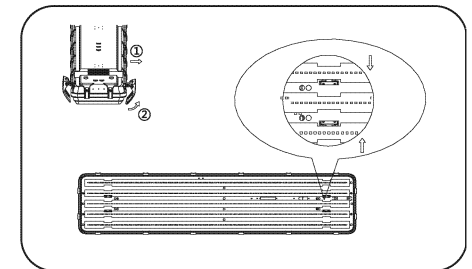
» Installation instructions

ALWAYS TURN OFF THE POWER SUPPLY FROM MAIN CIRCUIT BREAKER FIRST!

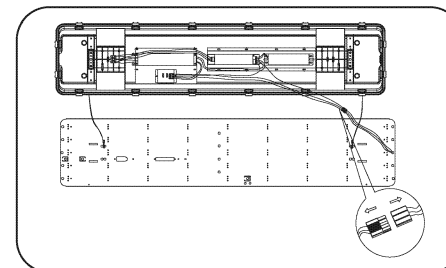
Installation mode 1 Surface Mount



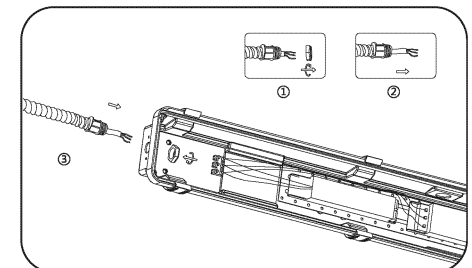
1. Secure mounting clips to ceiling using 4-8 screws. Space the clips 33.67 inches apart for 4 foot luminaire, or 37.8 inches apart for 8 foot luminaire. Orient the luminaire so conduit fitting faces incoming supply power or conduit. Align the recesses and apply gentle upward pressure to secure luminaire onto both mounting clips.



2. Release latches by pulling top of latch away from housing. Gently squeeze the buckle in and take out the PCB board (be careful not to touch the LEDs).



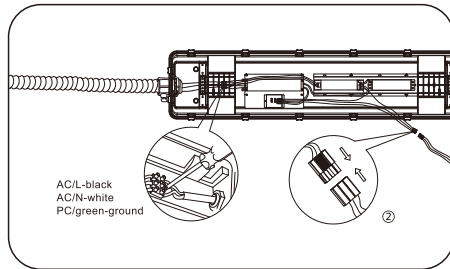
3. Disconnect the wire connecting the LED board and the driver to avoid unstable connection due to heavy suspension.



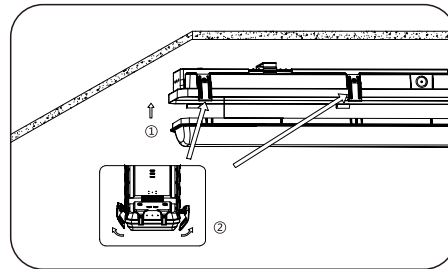
4. Separate the waterproof plug. After passing the input wire through the hose, connect the hose to the light fixture as shown.

NSF Vapor Tight Light Installation Instruction

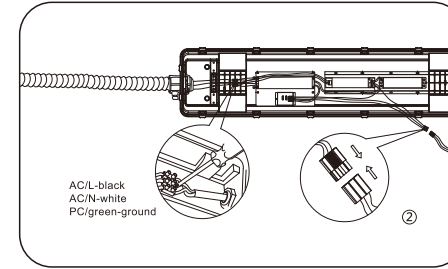
Please read this manual carefully before using the product



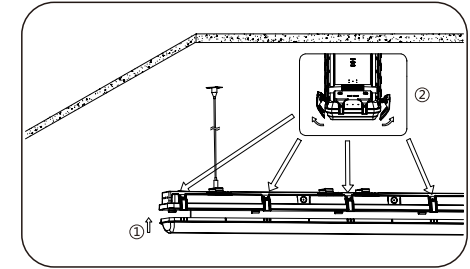
5. After the connection is completed, tighten the waterproof plug. Reconnect the wiring between the LED board and the driver.



6. After align lens and bottom housing, turn off the luminaire. Secure lens to housing with lens latches.

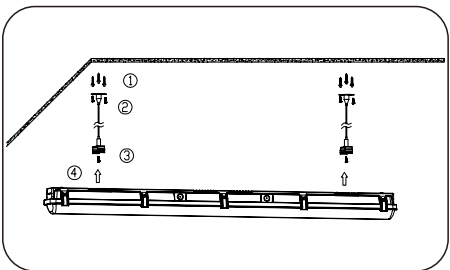


5. After the connection is completed, tighten the waterproof plug. Reconnect the wiring between the LED board and the driver.

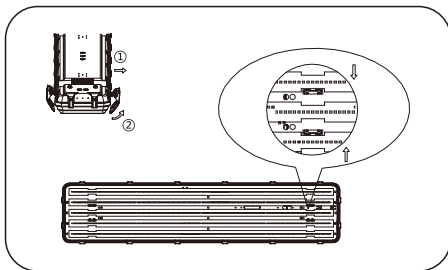


6. After align lens and bottom housing, turn off the luminaire. Secure lens to housing with lens latches.

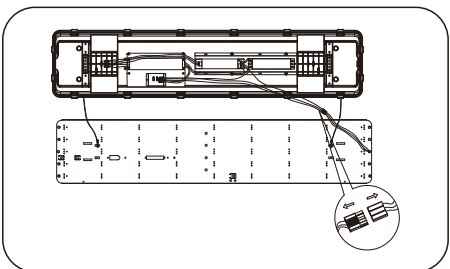
Installation mode 2 Suspension Mount



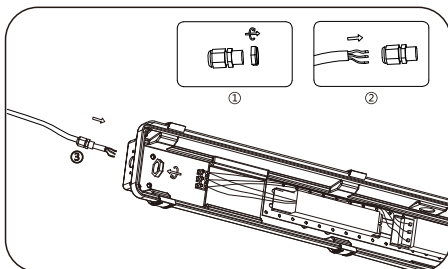
1. Secure suspended mounting kits to ceiling using 6-12 screws. Secure another side of suspended mounting kits to clips using 4-8 screws. Orient the luminaire so conduit fitting faces incoming supply power or conduit. Align the recesses and apply gentle upward pressure to secure luminaire onto both mounting clips.



2. Release latches by pulling top of latch away from housing. Gently squeeze the buckle in and take out the PCB board (be careful not to touch the LEDs).



3. Disconnect the wire connecting the LED board and the driver to avoid unstable connection due to heavy suspension.

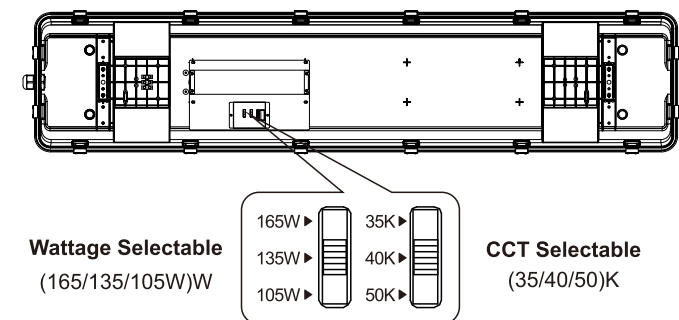


4. Separate the waterproof plug, and connect the input wire to the output wire of the power supply after passing through the plug and the outlet as shown in the figure.

» TROUBLESHOOTING

1. Check that the line voltage at the fixture is correct. Refer to wiring directions.
2. Ensure that the fixture is grounded properly.
3. Be sure the sensor, if used, is functioning properly.

» Wattage & CCT Selectable



» Wiring diagram

