

# PFX-3154

## INSTALLATION INSTRUCTION

**Important: Read all instructions prior to installation.**

### Amber LED Full Cutoff LED Wall Pack

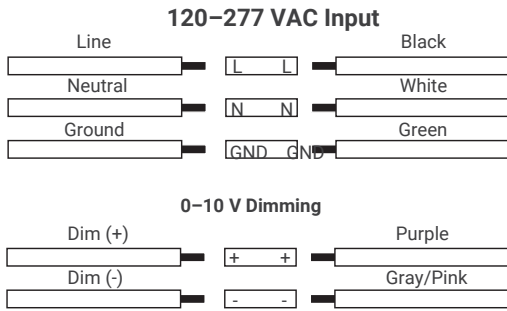


PFX-3154-15Kx-BRKT3-A

### Safety and Notes

- Product should be installed and serviced by a certified electrician in accordance with applicable national, state, and local building and electrical codes.
- To reduce the risk of electric shock, ensure that the main power source and circuit breakers are switched off before performing any installation or wiring procedures.
- Avoid looking directly into lamp when illuminated.
- Ensure all mounts are securely attached and will support the weight of the fixture. Failure to properly support fixture may result in damage or injury, for which the manufacturer does not assume responsibility.
- Photocell provides automatic dusk-to-dawn operation. The sensor can be disabled by unplugging it and capping the connector that was attached to the sensor.

### Wiring Diagram

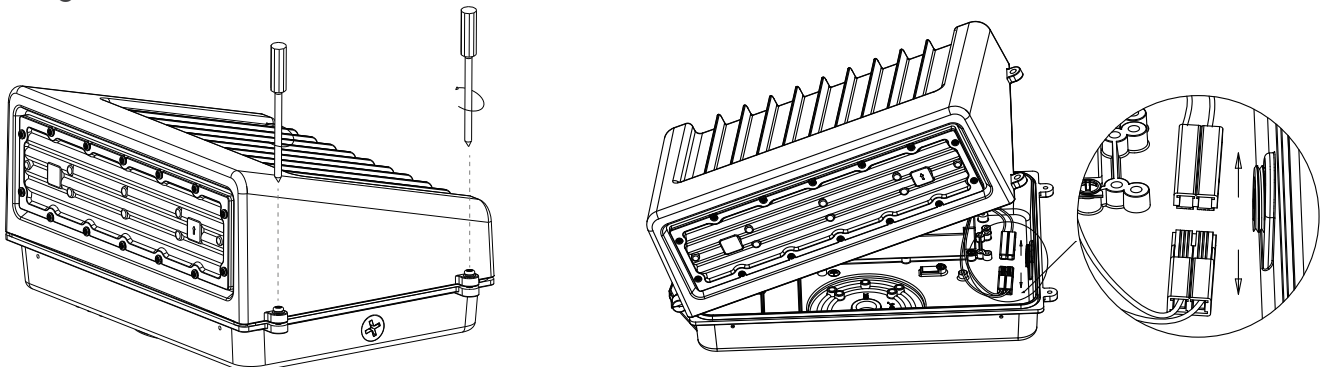


### Specifications

Model	PFX-3154-15Kx-BRKT3-A
Operating Temperature	-40°-122° F (-40°-50° C)
IP Rating	IP65

Check product label for specific electrical specifications related to installation. Improper installation will void warranty.

### Opening Fixture



**Disclaimer:**

Due to the rapid pace of technology change in the Lighting industry, the Information and Data presented in this spec sheet is for reference purposes only, please confirm with PARAFLEX at the time of finalizing the order or design. PARAFLEX does not warrant or represent that the information is free from errors or omission. The information may change without notice and PARAFLEX is not in any way liable for the accuracy of any information printed and stored or in any way interpreted or used.

# PFX-3154

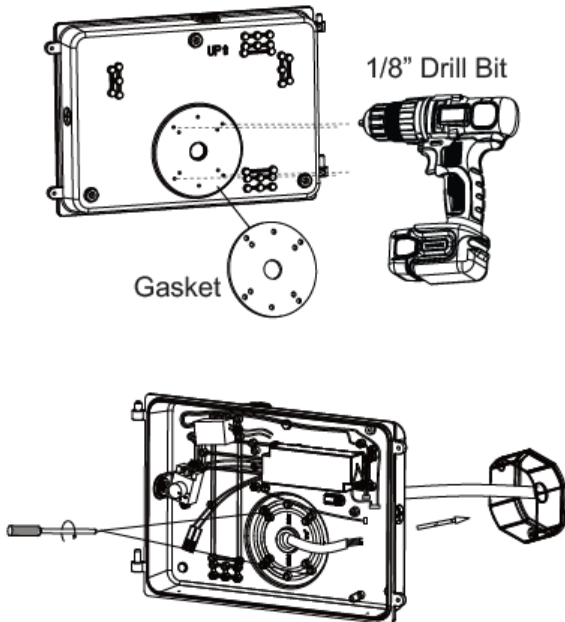
Amber LED Wall Pack Specifications



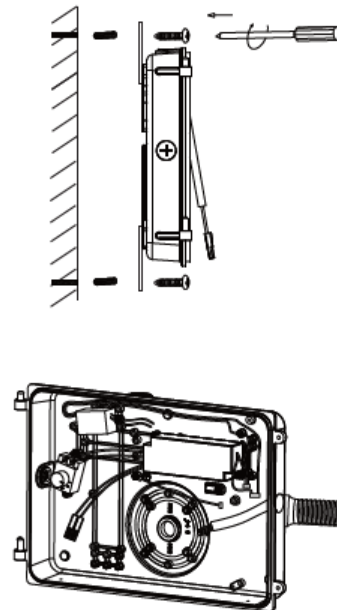
## Junction Box Installation

1. Remove screws and swing front housing out. Disconnect wiring from driver to LEDs and lift up to separate front and rear housings.
2. Drill holes in rear housing for mounting. For junction box wiring, remove rear pipe plug and for conduit mounting remove one of the side plugs.
3. Measure and create mounting holes on wall as needed.
4. Apply gasket and mount rear housing.
5. With supply power off, connect wiring.
6. Reattach front housing to rear housing.

### Junction Box Installation



### Conduit Installation



**Disclaimer:**  
Due to the rapid pace of technology change in the Lighting industry, the Information and Data presented in this spec sheet is for reference purposes only, please confirm with PARAFLEX at the time of finalizing the order or design. PARAFLEX does not warrant or represent that the information is free from errors or omission. The information may change without notice and PARAFLEX is not in any way liable for the accuracy of any information printed and stored or in any way interpreted or used.