





# PFX-3201

FLEXIBLE LED POST TOP



## ACCESSORIES

### HORIZONTAL TENON POLE FITTERS



**180° TWIN HORIZONTAL 2 3/8" TENON FOR SQUARE POLES**

4" - 2HT180D4  
5" - 2HT180D5



**90° TWIN HORIZONTAL 2 3/8" TENON FOR SQUARE POLES**

4" - 2HT90D4  
5" - 2HT90D5



**90° TRIPLE HORIZONTAL 2 3/8" TENON FOR SQUARE POLES**

4" - 3HT90D4



**90° QUAD HORIZONTAL 2 3/8" TENON FOR SQUARE POLES**

4" - 4HT90D4  
5" - 4HT90D5

### BULL HORNS



**180° DOUBLE BULLHORN 2 3/8" TENON**

4" & 5" - 2BH180D



**180° TRIPLE BULLHORN 2 3/8" TENON**

4" & 5" - 3BH180D



**180° QUAD BULLHORN 2 3/8" TENON**

4" - 4BH180D



**180° TWIN VERTICAL 2 3/8" TENON FOR SQUARE POLES**

4" - 2VT4  
5" - 2VT5



**180° TRIPLE VERTICAL 2 3/8" TENON FOR SQUARE POLES**

4" - 3VT4  
5" - 3VT5



**180° QUAD VERTICAL 2 3/8" TENON FOR SQUARE POLES**

4" - 4VT1804



**90° QUAD VERTICAL 2 3/8" TENON FOR SQUARE POLES**

4" - 4VT904  
5" - 4VT905

### WALL MOUNTING BRACKETS



**WALL MOUNT BRACKET**

4" & 5" - 1WMB



**WALL MOUNT 90° BRACKET**

4" & 5" - 1WMB90D



**SINGLE VERTICAL 2 3/8" TENON FOR SQUARE POLES**

4" - 1VT4  
5" - 1VT5

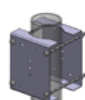
### VERTICAL TENON POLETOP FITTERS

### ROUND POLE ADAPTERS



**ROUND POLE ADAPTER**

RPA01



**ROUND POLE CLAMP**

RPC01

**Disclaimer:**

Due to the rapid pace of technology change in the Lighting industry, the Information and Data presented in this spec sheet is for reference purpose the order or design. PARAFLEX does not warrant or represent that the information is free from errors or omission. The information may change without notice and PARAFLEX is not in any way liable for the accuracy of any information printed and stored or in any way interpreted or used.