

# AL600

AREA & POST TOP LUMINAIRE



PROJECT

DATE

TYPE

NOTES

REV: 0



## HEAVY-DUTY, IP-65 RATED HOUSING

Die Cast Aluminum Housing with a Durable, Dark Bronze Powder Coat Finish, and a Heat-Resistant Polycarbonate Lens

## WET LOCATION RATED

Engineered and Constructed for Exterior Environments

## MULTIPLE MOUNTING OPTIONS

Multiple Mounting Options make the AL600 a Versatile Luminaire for Medium & Large Scale Lighting Applications

## 120-277V STANDARD

## PRODUCT APPLICATIONS

Parking Lots

Walkways

Buildings

Signage

Playgrounds

Parks & Recreational Fields

Loading Docks

## PRODUCT DESCRIPTION

This slick and modern luminaire has been designed to handle any environment. With a beautiful slimline design along with one of the highest lumen performance on the market, this versatile fixture can be used as a flood light or an area light. Including a multitude of mounting options, surge protection devices, IOT photocell capability, and the most technologically advanced LED's on the market. One piece die-cast aluminum body with die-cast hinge panel for easy installation access. With built-in heat sinks on the back of the luminaire. AL600 provides truly spectacular light while keeping the LEDs at a cool temperature.

## FEATURES:

### LISTING

UL listed for wet locations

### HOUSING

One piece die-cast aluminum body with die-cast hinge panel for easy installation access.

### LEDs

The most technologically advanced LED chips in the market

### FINISH

Standard Bronze UV stabilized powder coated finish

### LENS

Optional Type III, Type IV, Type V optics

### OPTIONS

Optional 347V or 480V with adder

Occupancy sensor on/off, Bi-Level Dimmable sensor,

Photocontrol optional available with adder.

Color option with adder

Standard 4kV surge

## Mounting Options



Trunnion



Slip Fitter



Straight Arm

PARAFLEX does not warrant or represent that the information is free from errors or omission. The information may change without notice and PARAFLEX is not in any way liable for the accuracy of any information printed and stored or in any way interpreted or used.

# AL600

AREA & POST TOP LUMINAIRE

**PARAFLEX**  
Fast Flexible Focused Lighting

PARAFLEX does not warrant or represent that the information is free from errors or omission. The information may change without notice and PARAFLEX is not in any way liable for the accuracy of any information printed and stored or in any way interpreted or used.

When Specifying Options, Please Check with Factory for Availability and Lead-Time.

## 1. ORDER FIXTURE

Sample Part # AL600 - 63W - 40K - T5 - BZ

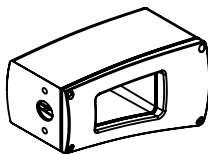
| MODEL | WATTAGE        | COLOR TEMPERATURE (CCT)   | OPTICS      | HOUSING COLOR   | OPTIONS & ACCESSORIES                    |
|-------|----------------|---------------------------|-------------|-----------------|--|
| AL600 |                |                           |             |                 |  |
|       | 63W 63 WATTS   | 40K 4000K - NEUTRAL WHITE | T3 TYPE III | BZ BRONZE       | PC 120-277V PHOTOCELL (3-pin Receptacle) |
|       | 92W 92 WATTS   | 50K 5000K - COOL WHITE    | T4 TYPE IV  | CC CUSTOM COLOR | MS MOTION SENSOR                         |
|       | 127W 127 WATTS |                           | T5 TYPE V   |                 | D1 0-10V DIMMING                         |
|       | 190W 190 WATTS |                           |             |                 | V1 480/347V INPUT (120-277V STANDARD)    |
|       | 229W 229 WATTS |                           |             |                 | SP SURGE PROTECTOR 10 KV                 |
|       | 257W 257 WATTS |                           |             |                 |  |

## 2. SELECT MOUNT

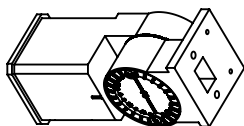
Sample Part # AL600 - TM - FE - INST

| MODEL | MOUNTING                | INSTALLATION                       |
|-------|-------------------------|------------------------------------|
| AL600 |                         |                                    |
|       | SA = Straight Arm Mount | FE-INST FIELD INSTALLED (STANDARD) |
|       | SF = Slip Fitter Mount  | FA-INST FACTORY INSTALLED          |
|       | TR = Trunnion Mount     |                                    |

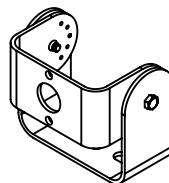
## MOUNTING OPTIONS



STRAIGHT ARM



SLIP FITTER



TRUNNION

## PRODUCT SPECIFICATIONS

| WATTAGE | CCT   | OPTICS | DELIVERED LUMENS** | EFFICACY |
|---------|-------|--------|--------------------|----------|
| 63W     | 4000K | T3     | 10151 lm           | 161 lm/W |
| 92W     | 4000K | T3     | 14820 lm           | 163 lm/W |
| 127W    | 4000K | T3     | 20485 lm           | 161 lm/W |
| 190W    | 4000K | T3     | 30076 lm           | 161 lm/W |
| 229W    | 4000K | T3     | 36888 lm           | 163 lm/W |
| 257W    | 4000K | T3     | 41824 lm           | 164 lm/W |

\*\* DISCLAIMER: This test report was produced in accordance with IES LM-79 photometric testing protocol for luminaires, using a single representative test fixture.

Actual production units may vary from the values reported here by up to ±10%.

# AL600

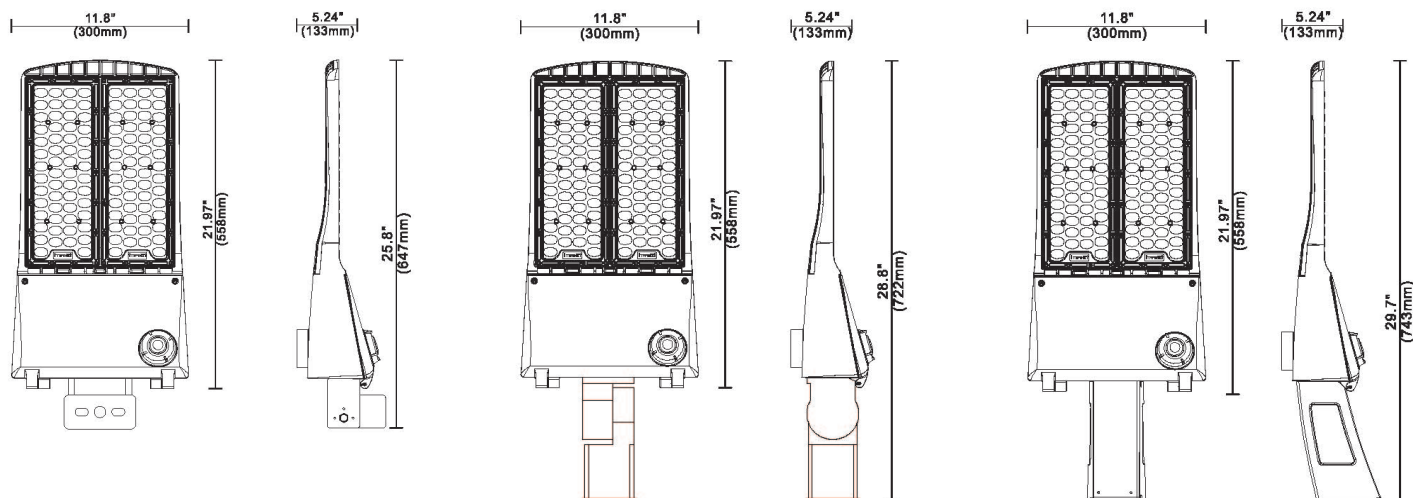
## AREA & POST TOP LUMINAIRE

**PARAFLEX**  
Fast Flexible Focused Lighting

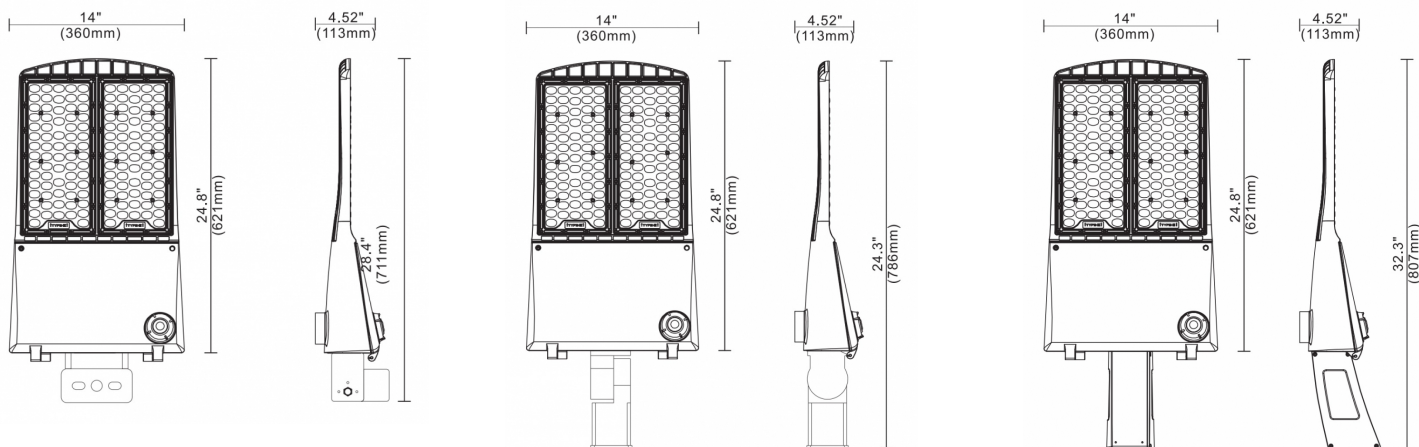
PARAFLEX does not warrant or represent that the information is free from errors or omission. The information may change without notice and PARAFLEX is not in any way liable for the accuracy of any information printed and stored or in any way interpreted or used.

## DIMENSIONS

### 63W - 190W PRODUCT DIMENSIONS



### 229W - 257W PRODUCT DIMENSIONS



PARAFLEX does not warrant or represent that the information is free from errors or omission. The information may change without notice and PARAFLEX is not in any way liable for the accuracy of any information printed and stored or in any way interpreted or used.