

PARAFLEX

Fast Flexible Focused Lighting

SERIES-3200 AREA / STREET LIGHTS

PFX-3203



63W & 93W

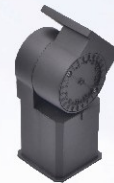


130W & 196W

Available Options



Trunnion



Slip Fitter



Pole Mount

Product Description:

This slick and modern luminaire has been designed to handle any environment. With a beautiful slimline design along with one of the highest lumen performance on the market, this versatile fixture can be used as a flood light or an area light. Including a multitude of mounting options, surge protection devices, IOT photocell capability, and the most technologically advanced LED's on the market, the PFX-3203 is ready to conquer the lighting landscape.

Optional Kelvin color* with adder.

Features:

LISTING

- ▶ UL and cUL listed for wet locations

HOUSING

- ▶ One piece die-cast aluminum body with die-cast hinge panel for easy installation access.

LEDS

- ▶ The most technologically advanced LED chips in the market

FINISH

- ▶ UV stabilized powder coated finish

LENS

- ▶ Optional Type III, Type IV, Type V optics

OPTIONS

- ▶ Optional 347V or 480V with adder
- ▶ Bi-Level Dimmable or Photocontrol optional available with adder
- ▶ Finish - Bronze. Color option with adder
- ▶ Standard 4kV surge

PARAFLEX does not warrant or represent that the information is free from errors or omission. The information may change without notice and PARAFLEX is not in any way liable for the accuracy of any information printed and stored or in any way interpreted or used.

A 3 Luger Rd. #1 - Denville, NJ 07834

E info@paraflex.com

W www.paraflex.com

P 973-340-6040

 **Fast Flexible Focused Lighting**

Performance Data

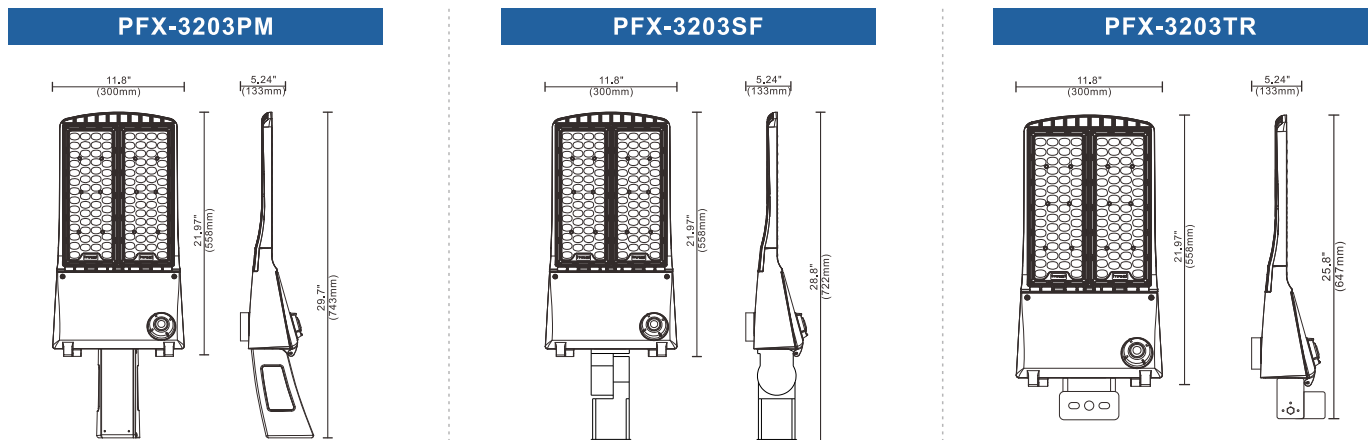
Model No.	Nominal Watts**	Dist. Type	Lumens**	Efficacy**	Input Voltage
PFX-3203	63 W	Type III	10170 lm**	161 lm/W	UNV=120-277V
	93 W	Type III	14820 lm**	163 lm/W	UNV=120-277V
	130 W	Type III	20878 lm**	165 lm/W	UNV=120-277V
	196 W	Type III	30122 lm**	161 lm/W	UNV=120-277V
	140 W	Type III	22718 lm**	161 lm/W	HV4=347-480V

Specification:

Example: PFX-3203

Model No.	Nominal Watts**	Input Voltage	CRI	Color Temp	Distribution	Option		Finish	Starting Temp
						Accessories	Mounting		
PFX-3203	63=63W	UNV=120-277V	7=70+	40=4000 K	T3=Type III	XS =10kv Surge OS =Occupancy Sensor PE =Photocontrol 3R =3-pin Receptacle 5R =5-pin Receptacle 7R =7-pin Receptacle	PM =Pole Mount SF =Slip Fitter U =U Bracket	BZ=Bronze	-40°C
	93=93W	HV4=347-480V		50=5000 K	T4=Type IV				
	130=130W				T5=Type V				
	196=196W								
	140=140W								

Dimension:



* Different LED Kelvin temperature available with 4-6 week lead time. Please call for a quote.

** DISCLAIMER: This test report was produced in accordance with IES LM-79 photometric testing protocol for luminaires, using a single representative test fixture. Actual production units may vary from the values reported here by up to ±10%.



IP65

PARAFLEX does not warrant or represent that the information is free from errors or omission. The information may change without notice and PARAFLEX is not in any way liable for the accuracy of any information printed and stored or in any way interpreted or used.